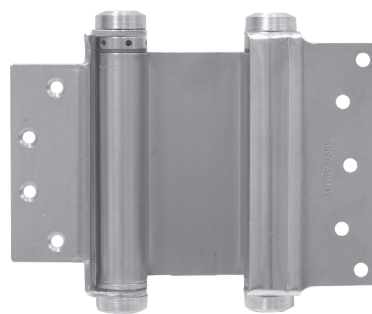


## Double Acting Spring Hinge

**Recommended for wood doors not weighted with plate glass or heavy hardware.**

- Door flange mortised or surface applied to edge of door
- Jamb flange surfaced applied to jamb
- Do not use on doors with hinge edge beveled
- Non-handed, non-template
- Packed with all wood screws
- Polished and plated 26D

1001



No.	ANSI Cross Reference	Base Material
1001	K81041	Steel

### Maximum Door Sizes and Weights

Catalog Number	2 Hinges Per Door		3 Hinges Per Door		
	Door Weight Lbs.	Door Width	Door Weight Lbs.	Door Width	Door Height
1001 3"	35	2' 0"	40	2' 8"	5' 0"
1001 4"	60	2' 4"	75	3' 0"	6' 8"
1001 5"	65	2' 8"	93	3' 0"	6' 8"
1001 6"	75	2' 8"	107	3' 0"	7' 0"

\* Minimum height for weights shown. Hinge capacity decreases as door height decreases. Refer to 6 x 41/2 1001 for 13/4" thick stock hollow metal doors.

### Approximate Dimensions in Inches

<b>A</b> Length of Door Flange (size of hinge)	3"	4"	5"	6"
<b>B</b> Minimum Thickness of Door	3/4"	7/8"	1 1/8"	1 1/4"
<b>C</b> Maximum Thickness of Door with Chamfering	1"	1 1/4"	1 1/2"	1 3/4"
<b>D</b> Maximum Thickness of Door without Chamfering for Metal Doors	7/8"	1 1/8"	1 3/8"	1 3/4"
<b>Door Specifications</b>				
Minimum	3/4" x 2'2" to	7/8" x 2'2" to	1 1/8" x 2'4" to	1 1/4" x 2'6" to
Maximum	1" x 2'0"	1 1/4" x 2'0"	1 1/2" x 2'2"	1 3/4" x 2'4"

It is recommended that three hinges be used on door sizes as indicated above.

The center hinge should be installed as close as possible to the top hinge for maximum support.

Application

