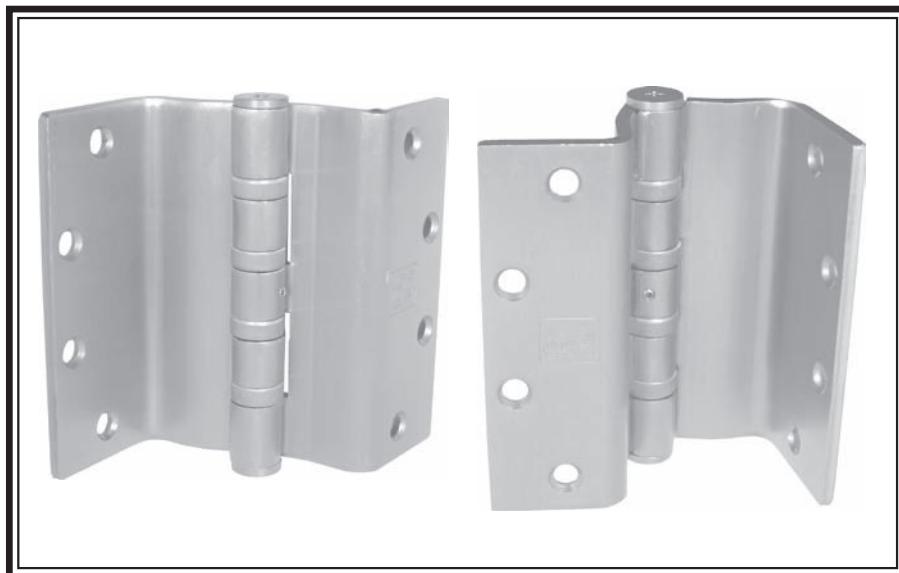




## SWING CLEAR FULL MORTISE BALL BEARING

**HEAVY WEIGHT**  
**5"**

**H6**



**GENERAL PRODUCT INFORMATION:** PBB, Inc. template hinges are manufactured to close tolerances and meet all specifications and requirements set by the American National Standards Institute (ANSI).

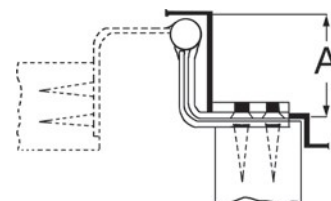
For use in hospitals, institutional or commercial type buildings for barrier-free environment. Wherever doors are required to meet barrier-free codes (ADA) or are required to swing completely clear of the openings so that wide equipment can pass through without damaging doors, frames or equipment, reducing opening maintenance.

**MATERIAL GAUGE:**  
.190 ± .005 for 5"

**SC4B81 (ANSI A8121)**  
**Steel** - Polished and Plated or Bonderized and Prime Coated for Painting.

**SC4B51 (ANSI A5121)**  
**Stainless Steel**-Polished and Satin Finish

- All swing clear hinges are made for reversible applications
- Designed to swing doors completely clear of the opening when door is opened 95°.
- When opened 90° door projects 11/64" past stop of jamb.
- Recommended for 3'4" width doors having a thickness of 2" or more.
- For heavy weight doors receiving high frequency service.
- For hospital type, add HT to suffix of part number
- All hinges are ANSI template.



### OTHER SPECIFICATIONS:

Height of hinge:  
5.00 + .000  
- .015 for 5"

Minimum Clearance Required  
Dimension "A" (inches) 2-1/8"

**\*NOTE: Specify square or beveled when ordering product.**

5" STANDARD SCREW SIZE
FHMS - 12-24 x 1/2"
FHWS - 12 x 1-1/4"



### PACKAGING INFORMATION:

One hinge per plastic bag, 3 hinges and 1 screw pack per unit carton.

8 unit carton or 24 hinges per master shipping carton.

1 screw pack includes all machine screws (24), and 1/2 wood screws (12). ATMS & AWS also available.