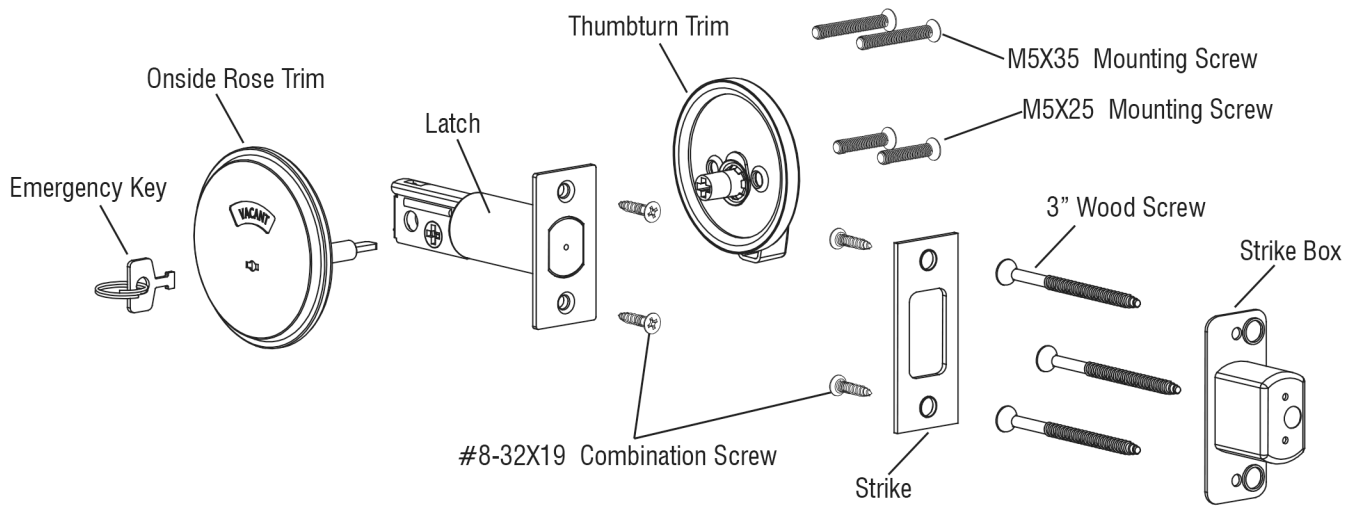


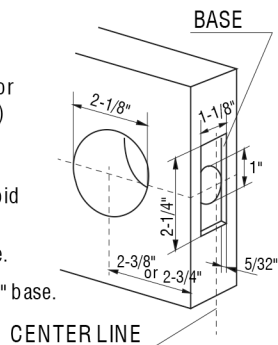
HOW TO INSTALL THIS DEADBOLT LOCK

The deadbolt is set for 1-3/8" ~ 2" thick door



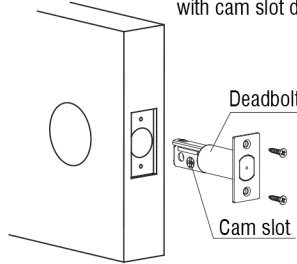
1 MARK DOOR & BORE HOLES

- A:** Fold template on edge of door mark site (2-3/8") or (2-3/4") of holes.
- B:** Drill a (2-1/8") hole through door (from both sides to avoid damaging door).
- C:** Drill a (1") hole in door edge.
- D:** Cut out a 2-1/4"x1-1/8"x5/32" base.

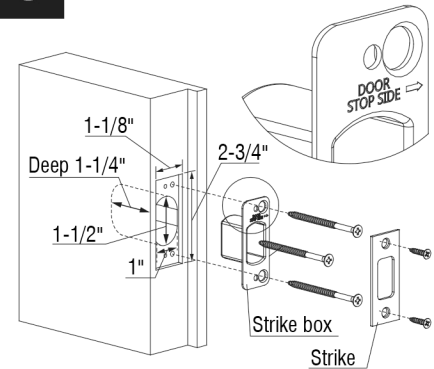


2 INSTALL LATCH

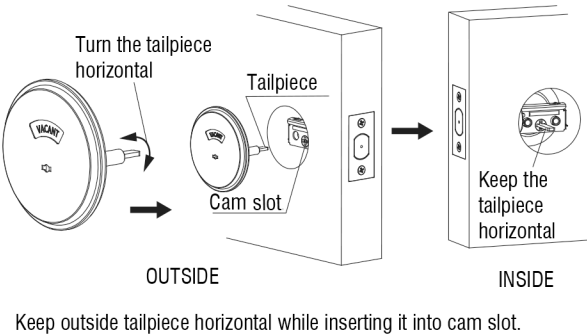
Install deadbolt oriented with cam slot down.



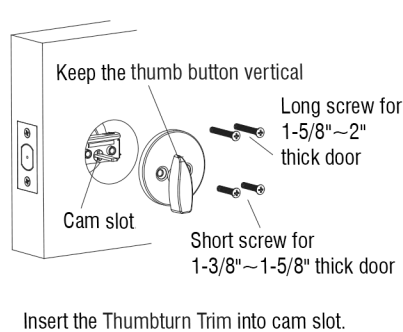
5 INSTALL STRIKE



3 INSTALL OUTSIDE TRIM



4 INSTALL INSIDE TRIM



EMERGENCY KEY

1. Insert Emergency Key into slot.
2. Turn Key 90° to retract latchbolt.



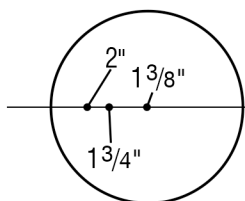
Note:

When finishing install, check operation of deadbolt by extending the deadbolt using the thumbturn, then retract the deadbolt using the key or thumbturn and then remove the key. Make sure the tailpiece is inserted through slot correctly, if not adjust tailpiece rotation and reinstall trim.

70677302A



TEMPLATE



Mark center of door thickness for 1" dia. hole

