

4500 Series - Heavy Duty Commercial Application

Hager 4500 Series Exit Devices are ideal for use in heavy duty commercial applications including office buildings, medical facilities, schools, and hospitality structures. The Hager 4500 Series is designed and engineered to provide a lifetime of superior performance on doors in heavy duty commercial applications. Properly applied and maintained Hager 4500 Series Exit Devices and Trim are backed by a lifetime warranty, providing peace of mind from distributor to building owner. Go to www.hagerco.com for specific warranty conditions.

Hager 4500 Series Exit Devices are BHMA certified Grade 1 and meet Life Safety codes and Fire Safety requirements. The 4500 Series Rim and Surface Vertical Rod devices meet ANSI requirements to be listed as Severe Windstorm Components and are approved for High Velocity Hurricane Zone areas.

Extruded aluminum construction, stainless steel push bar cover, die cast caps and covers, and dead locking stainless steel Pullman type latchbolts provide premium security and performance at value pricing.



LIFETIME
WARRANTY

4500 Series - Compliance & Certifications

4500 SERIES DEVICES

BHMA Certified ANSI/BHMA
A156.3-2014 Grade 1



UL305 Listed for Panic Hardware



UL10C Positive Pressure Rated



UL10B Neutral Pressure Rated



Complies with ANSI A117.1 for
Accessible Buildings and Facilities



ANSI A 250.13 Severe Windstorm
Resistant Component

Miami Dade NOA #17-1219.14

| RIM | SVR | LBR | CVR | CLB | MOR |
|-----|-----|-----|-----|-----|-----|
| YES | YES | YES | YES | YES | YES |
| YES | YES | YES | YES | YES | YES |
| YES | YES | YES | YES | YES | YES |
| YES | YES | YES | YES | YES | YES |
| YES | YES | --- | --- | --- | --- |
| YES | YES | --- | --- | --- | --- |

4500 SERIES FIRE-RATED DEVICES

UL/cUL Listed for "A" Label Door Up to and
Including...

Rim with Fire-rated Removable Mullion
4900UF UL/cUL Listed and Warnock
Hersey Listed for "A" Label Door Up to
and Including...



VR X VR SAME DIRECTION*
UL/cUL Listed for "A" Label Door Up to
and Including...

VR X VR Double Egress
UL/cUL Listed for "A" Label Door Up to
and Including...

| RIM F | SVR F | LBR F | CVR F | CLB F | MOR F |
|---------------|------------------|-----------------|------------------|-----------------|---------------|
| 3 HR 4'X8' | 3 HR 4'X10' | --- | 3 HR 4'X10' | --- | 3 HR 4'X8' |
| 3 HR 8'X8' | --- | --- | --- | --- | --- |
| --- | 3 HOUR 8'X10' | 3 HOUR 8'X8' | 3 HOUR 8'X10' | 3 HOUR 8'X8' | --- |
| --- | 3 HR 8'X10' | 3 HR 8'X8' | 3 HR 8'X10' | 3 HR 8'X8' | --- |

4500 Series - General Information

Installation Made Easy

For the convenience of our customers, Hager Companies introduced several key features to the exit device market:

- Thru-bolts are included with every model. Wood and machine screws are also provided standard in every package.
- Slotted strikes speed up installation, allowing the installer to make easy adjustments to align the latch to the strike.
- Non-handed device offers added versatility and means less inventory.
- Escutcheon trim is surface mounted with the locking mechanism built inside, reducing door preparation and installation time by requiring fewer holes in the door.

Shim Kits

Shim kits are available for devices on doors with glass bead kits or other interfacing moldings. Each kit contains two 1/8" (3.2 mm) shims and the appropriate longer fasteners.

Dogging

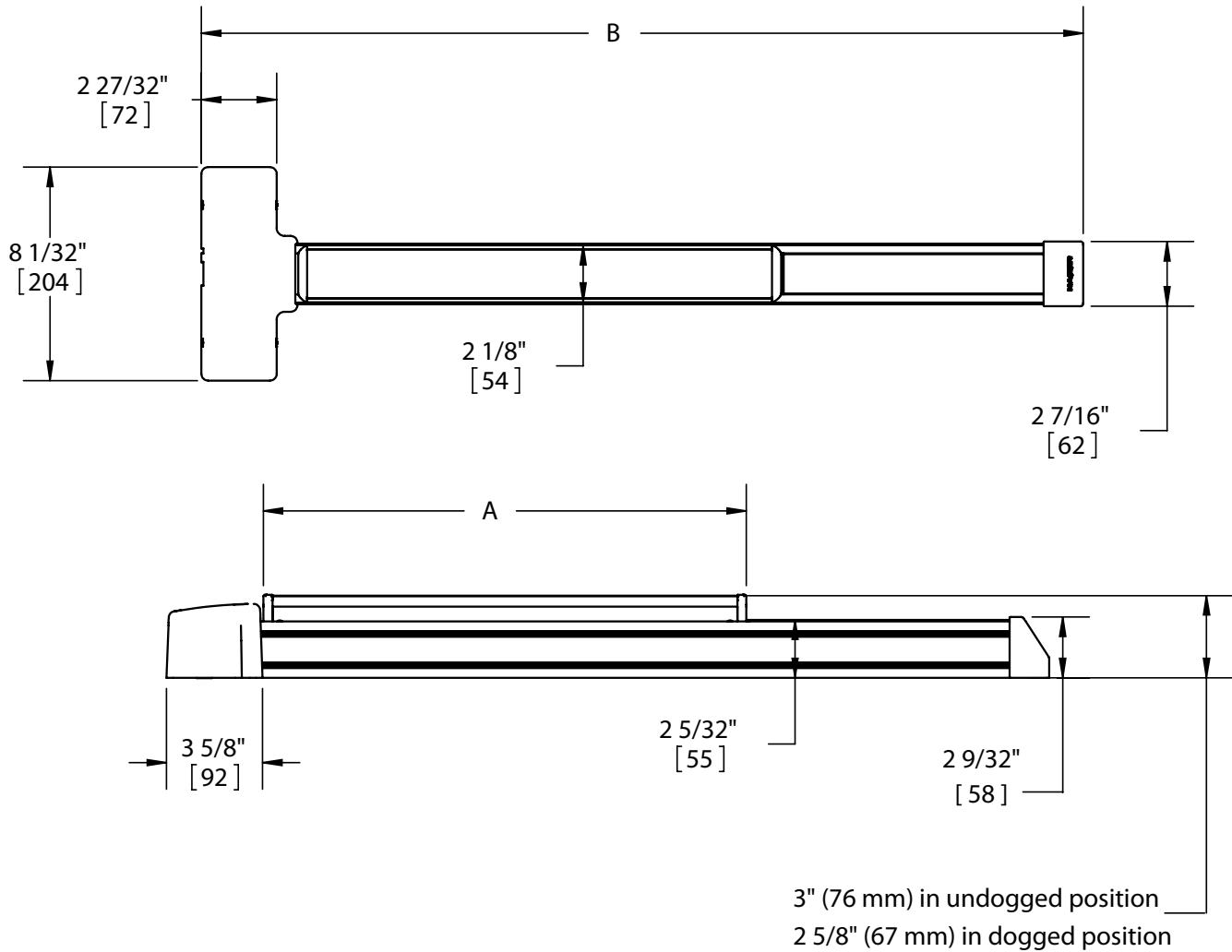
Cylinder dogging or less dogging are available to replace the standard hex key dogging on panic exit devices. For cylinder dogging, specify CD on order or purchase 4926 for retrofit applications. Unit requires 1-1/8" (29mm) - 1-3/8" (35mm) mortise cylinder (part number 3902) with standard cam. For less dogging, specify LD on order.

Sizing

The exit device is cut for 36" (914 mm) and 48" (1219 mm) wide doors. For other door widths, cut exit device to appropriate length. Recommended overall length of exit device is equal to the door width minus four inches. The surface vertical rod devices are supplied for an 84" (2134 mm) opening standard, but can be ordered for a 96" (2438 mm) opening. Extension rods are available to accommodate openings taller than 96" (2438 mm) and up to 120" (3048 mm).

| Trim Functions | Part Number | Function Description | ANSI Number |
|---------------------|--------------------|---------------------------------|-------------|
| Blank Escutcheon | 45BE, 45MB | Always operable (Passage) | 14 |
| Cylinder Escutcheon | 45CE, 45MC | Key locks or unlocks lever | 08 |
| Dummy | 45DT, 45MD 45PD | Pull when device is dogged down | 02 |
| Night Latch | 45NL, 45MN 45PN | Key retracts latchbolt | 03 |
| Cylinder Thumbpiece | 45PT | Key locks or unlocks thumbpiece | 05 |
| Electrified Trim | 45ET ELEU | Fail safe/Fail secure | E05/E06 |

4500 Series - Device Profiles



| 4500 SERIES | A | B |
|------------------|----------------------------|----------------------------|
| 4500 PANIC - 36" | $18 \frac{5}{32}"$ (461mm) | $33 \frac{5}{32}"$ (842mm) |
| 4500 FIRE - 36" | | |
| 4500 PANIC - 48" | 24"(611mm) | 44"(1121mm) |
| 4500 FIRE - 48" | | |

4500 Series - How To Order

4500 SERIES EXIT DEVICE

| 4501 | RIM | FR | 36" | US3 | 1-3/4" | ALK |
|---|---|--|--|--|--|---|
| Product Group 500 Series, Grade 1 | Type | Rating | Door Size* | Finish | Door Thickness | Electric Modifications |
| | RIM - Rim Device SVR - Surface Vertical Rod LBR - Surface Vertical Rod Less Bottom Rod CVR - Concealed Vertical Rod CLB - Concealed Vertical Rod Less Bottom Rod DMY - Dummy Push Pad MRT - Mortise Device (MC, MB, MD) MRTN - Mortise Night Latch Device (MN) | | | US3 US4 US10B US26 US26D US32D BLK | | AI - Authorized Ingress** ALK - Alarm Kit ALL - Alarm Kit w/ Tamper Switch and Latch Monitor** ALM - Alarm Kit w/ Latch Monitor** ALT - Alarm Kit w/ Tamper Switch DE - Delayed Egress OBDE - Onboarded Delayed Egress LM - Latchbolt Monitor RX - Request to Exit RX2 - Dual Request to Exit RXAI - Request to Exit w/ Authorized Ingress** RXLM - Request to Exit w/ Latchbolt Monitor** MLR - Motor Driven Electric Latch Retraction MLRX - Motor Driven Electric Latch Retraction w/ Request to Exit MLRLM - Motor Driven Electric Latch Retraction w/Latchbolt Monitoring** MLRXLM - Motor Driven Electric Latch Retraction w/Request to Exit & Latchbolt Monitoring** ELEU - Fail Secure/Fail Safe, 12/24 Volt6 |
| | | FR - Fire-Rated 0 - Non-Fire Rated CD - Cylinder Dogging CDW - Cylinder Dogging and Windstorm Rated L - Less Dogging WR - Windstorm Rated FW - Windstorm and Fire-Rated FEC - Flush End Cap | 24"* 36" 48" 36" x 84" 36" x 96" 48" x 84" 48" x 96" | | 1-5/8" 1-3/4" 2" 2-1/2" 3" | |

4500 SERIES TRIM

| 45 | CE | ARC | RHR | US3 | 1-3/4" | TW |
|---|---|--|----------------|---|--|--|
| Product Group 45 - 4500 Series, Grade 1 | Trim/Function | Lever Style | Handing | Finish | Door Thickness | Options |
| | BE - Blank Escutcheon Function 14, always operable CE - Cylinder Escutcheon Function 08, key locks/unlocks DT - Dummy Trim Function 02, pull when dogged down ET - Electric Escutcheon Trim (E05/E06) NL - Night Latch (1-3/4" to 2-1/2" doors) Function 03, key retracts latchbolt PD - Pull Plate Dummy Trim (Not available for CVR device) Function 02, pull when dogged down PN - Pull Plate Night Latch (Not available for CVR device) Function 03, key retracts latchbolt PT - Thumbpiece Entrance (Not available for CVR device) Function 05, key locks or unlocks thumbpiece MB - Mortise Blank Escutcheon (14) Function 14, always operable MC - Mortise Cylinder Escutcheon (08) Function 08, key locks/unlocks MD - Mortise Dummy Trim (02) Function 02, pull when dogged down MN - Mortise Night Latch (03) Function 03, key retracts latchbolt | ARC - Archer AUG - August WLM - William WTN - Withnell CHA - Charles JHN - Johnston JOS - Joshua WRN - Warren | RHR LHR | US3 US4 US10B US26 US26D US32D (pull plate trim only) BLK | 1-5/8" 1-3/4" 2" 2-1/2" 3" | TW - Tactile Warning A- Antimicrobial Coating (US26D and US32D only) |

*24" door size available with extended lead times.

**Not available on Mortise Exit Devices.

Notes:

a. For more cylinder information, please refer to Cylinder, Core & Keying in the Locks section of the catalog.

b. If using shim kit, specify total door thickness including shims.

4500 Series - Grade 1 Rim Device

WARRANTY

Lifetime warranty

FEATURES

| | |
|----------------|---|
| Certification: | BHMA Certified Grade 1 and meets life safety codes and fire-safety requirements. |
| Covers: | Stainless steel, zinc |
| Cover Tube: | Aluminum |
| Dogging: | <ul style="list-style-type: none"> • Hex key dogging standard on panic-rated devices • Less dogging available on panic-rated devices, specify LD • Cylinder dogging available on panic-rated devices, specify CD (3902 mortise cylinder with standard cam sold separately. Cylinder Length of 1-1/8" (29mm) - 1-3/8" (35mm) is required.) |
| End Caps: | <ul style="list-style-type: none"> • Zinc • OPTIONAL Flush end cap (Zinc) |
| Fasteners: | <ul style="list-style-type: none"> • Wood and machine screws • Thru-bolts supplied standard |
| Latchbolt: | 3/4" (19 mm) throw, pullman type with automatic dead-latching, stainless steel |
| Strikes: | <ul style="list-style-type: none"> • Stainless steel with stainless steel pin and roller - included standard with panic device • Solid stainless steel - included standard with fire-rated device • Surface applied to frame with slotted holes for easy adjustment • Double door strike for use with surface vertical rod and rim device available |



SPECIFICATIONS

| | |
|-----------------|---|
| Door Thickness: | 1-3/4" (44 mm) - Standard up to 3", except with night latch (NL) which is 2-1/2" |
| Door Width: | <ul style="list-style-type: none"> • 36" (914 mm) field sizeable to 30" (762 mm) panic-rated door and 28" (711 mm) fire-rated door • 48" (1219 mm) field sizeable to 36" (914 mm) panic- or fire-rated door |
| Projection: | <ul style="list-style-type: none"> • 3" (76 mm) in undogged position • 2-5/8" (67 mm) in dogged position |
| Stile Width: | <ul style="list-style-type: none"> • 5-3/8" (137 mm) - minimum stile width required for single door and 5/8" (16 mm) stop • 4-7/8" (124 mm) - minimum stile width required for double door x surface vertical rod with double door strike • 5-3/4" (146 mm) - minimum stile width required for double doors with 2" (51 mm) mullion • 5" (127mm) - minimum stile width required for double doors with a middle rail and a 2" mullion • All stile widths are measured from door edge. |
| Notes: | <ul style="list-style-type: none"> • Recommended for use on appropriately reinforced doors • Where fire rated rim x rim x mullion is used order 4912 Strike and Hook Kit |

TRIM

- 4500 Series excutcheon trim for rim device is surface mounted with a variety of lever options (pp. 22-23)
- Pull plate trim
- Vandal resistant
- Rim cylinder x optional pull

FINISHES

- US3, US4, US10B, US26, US26D, US32D, BLK
- Trim not available in US32D
- Anti-Microbial available with US26D, US32D

4500 Series - Grade 1 Rim Device - Electrified

WARRANTY

- One-year on electrified components
- Lifetime on hardware components

FEATURES

Same as 4500 Series Rim Device



SPECIFICATIONS

Door Width:

- 36" (914 mm) field sizeable to 30" (762 mm) panic-rated door and 28" (711 mm) fire-rated door for devices with any monitoring switches
- 48" (1219 mm) field sizeable to 36" (914 mm) panic- or fire-rated door for devices with any monitoring switches
- 36" (914mm) field sizeable to 34" (864mm) door minimum for devices with motorized electric latch retraction
- 36" (914mm) door minimum for devices with alarm kit, delayed egress or onboard delayed egress
- 48" (1219mm) field sizeable to 42" (1067mm) door minimum for devices with alarm kit
- 48" (1219mm) field sizeable to 40" (1016mm) door minimum for devices with motorized electric latch retraction
- 48" (1219mm) door minimum for devices with delayed egress or onboard delayed egress

FUNCTIONS

- RX - Request to Exit (field installation kit 2-649-5001)
- RX2 - Dual Request to Exit
- ALK - Alarm Kit (kit 4940)
- ALM - Alarm Kit with Latch Monitor Switch (2-649-0168)
- ALT - Alarm Kit with Tamper Switch (2-649-1090)
- ALL - Alarm Kit with Latch Monitor and Tamper Switch
- AI - Authorized Ingress
- RXAI - Request to Exit with Authorized Ingress
- LM - Latchbolt Monitor
- RXLM - Request to Exit with Latchbolt Monitor
- MLR - Motor Driven Electric Latch Retraction (field installation kit 2-649-5007)
- MLRX - Motor Driven Electric Latch Retraction with Request to Exit
- MLRXLM - Motor Driven Electric Latch Retraction w/Request to Exit and Latchbolt Monitoring
- MLRLM - Motor Driven Electric Latch Retraction w/Latchbolt Monitoring
- DE - Delayed Egress (must order wall mount controller 2-679-0630 separately) Onboard
- OBDE - Delayed Egress (requires Mortise Cylinder 3902 1-1/8" - 1 3/8" length, 3978 Cloverleaf or equivalent tailpiece required)

Electrical Specifications and Wire Requirements - See 4500 Series Electric Modifications page 20.

4500 Series - Grade 1 Surface Vertical Rod Device

WARRANTY

Lifetime warranty

FEATURES

Certification:

BHMA Certified Grade 1 and meets life safety codes and fire-safety requirements.

Covers:

Stainless steel, zinc

Cover Tube:

Aluminum

Dogging:

- Hex key dogging standard on panic-rated devices
- Less dogging available on panic-rated devices, specify LD
- Cylinder dogging is available on panic-rated devices, specify CD (3902 mortise cylinder with standard cam sold separately. Cylinder Length of 1-1/8" (29mm) - 1-3/8" (35mm) is required.)

End Caps:

- Zinc
- OPTIONAL Flush end cap (Zinc)

Fasteners:

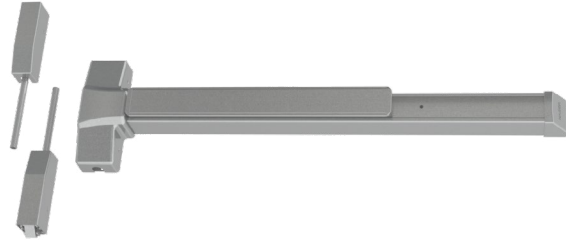
- Wood and machine screws
- Thru-bolts supplied standard

Latchbolt:

- Top - 1/2" (13 mm) throw, pullman type with automatic dead-latching, stainless steel
- Bottom - 1/2" (13 mm) throw, pullman type, held retracted during door swing, stainless steel

Strikes:

- Stainless steel with stainless steel pin and roller - included standard with panic device
- Solid stainless steel - included standard with fire-rated device
- Surface applied to frame with slotted holes for easy adjustment
- 10' (3048 mm) fire-rated device requires strike and hook kit, 4912 for top strike
- Double door strike for use with surface vertical rod and rim device available



SPECIFICATIONS

Door Thickness:

1-3/4" (44 mm) - Standard up to 3", except with night latch (NL) function which is 2-1/2"

Door Width:

- 36" (914 mm) field sizeable to 30" (762 mm) panic-rated door and 28" (711 mm) fire-rated door
- 48" (1219 mm) field sizeable to 36" (914 mm) panic- or fire-rated door

Projection:

- 3" (76 mm) in undogged position
- 2-5/8" (67 mm) in dogged position

Vertical Rods:

- Rods for 7' (2134 mm) doors - 33-1/4" (845 mm) top rod length
- Rods for 8' (2438 mm) doors - 45-1/4" (1149 mm) top rod length
- Extension rods kits available, 2' (610 mm) or 3' (914 mm) for doors over 7'

Stile Width:

- 5-3/8" (137 mm) - Minimum stile width required for single door and 5/8" (16 mm) stop
- 4-7/8" (124 mm) - Minimum stile width required for double doors
- 4-7/8" (124 mm) - Minimum stile width required for double door x Rim Device with double door strike
- All stile widths are measured from door edge

Notes:

- Center line prep is 40". If door prep elevation is lower, a longer top rod will need to be ordered.
- Recommended for use on appropriately reinforced doors

TRIM

- 4500 Series escutcheon trim is offered with variety of lever options
- Pull plate trim (excluding 45PT)
- Vandal resistant
- Rim cylinder x optional pull

FINISHES

- US3, US4, US10B, US26, US26D, US32D, BLK
- Trim is not available in US32D
- Anti-microbial available with US26D, US32D

4500 Series - Grade 1 Surface Vertical Rod Device - Less Bottom Rod (LBR)

WARRANTY

Lifetime warranty

FEATURES

| | |
|----------------|---|
| Certification: | BHMA Certified Grade 1 and meets life safety codes and fire-safety requirements. |
| Covers: | Stainless steel, zinc |
| Cover Tube: | Aluminum |
| Dogging: | <ul style="list-style-type: none"> • Hex key dogging standard on panic-rated devices • Less dogging available on panic-rated devices, specify LD • Cylinder dogging is available on panic-rated devices, specify CD (3902 mortise cylinder with standard cam sold separately. Cylinder Length of 1-1/8" (29mm) - 1-3/8" (35mm) is required.) |
| End Caps: | <ul style="list-style-type: none"> • Zinc • OPTIONAL Flush end cap (Zinc) |
| Fasteners: | <ul style="list-style-type: none"> • Wood and machine screws • Thru-bolts supplied standard |
| Latchbolt: | Top - 1/2" (13 mm) throw, pullman type with automatic dead-latching, stainless steel |
| Strikes: | <ul style="list-style-type: none"> • Stainless steel with stainless steel pin and roller - included standard with panic device • Solid stainless steel - included standard with fire-rated device • Surface applied to frame with slotted holes for easy adjustment • Double door strike for use with surface vertical rod and rim device available |



SPECIFICATIONS

| | |
|-----------------|---|
| Door Thickness: | 1-3/4" (44 mm) - Standard up to 3", except with night latch (NL) function escutcheon trim which is 2-1/2" |
| Door Width: | <ul style="list-style-type: none"> • 36" (914 mm) field sizeable to 30" (762 mm) panic-rated door and 28" (711 mm) fire-rated door • 48" (1219 mm) field sizeable to 36" (914 mm) panic- or fire-rated door |
| Projection: | <ul style="list-style-type: none"> • 3" (76 mm) in undogged position • 2-5/8" (67 mm) in dogged position |
| Vertical Rods: | <ul style="list-style-type: none"> • Rods for 7' (2134 mm) doors - 33-1/4" (845 mm) top rod length • Rods for 8' (2438 mm) doors - 45-1/4" (1149 mm) top rod length • Extension rod kits available, 2' (610 mm) or 3' (914 mm) for doors over 7' |
| Stile Width: | <ul style="list-style-type: none"> • 5-3/8" (137 mm) - Minimum stile width required for single door and 5/8" (16 mm) stop • 4-7/8" (124 mm) - Minimum stile width required for double doors • 4-7/8" (124 mm) - Minimum stile width required for double doors x rim device with double door strike • All stile widths are measured from door edge |
| Notes: | <ul style="list-style-type: none"> • Hole plug for head cover included standard • Recommended for use on appropriately reinforced doors • A spring loaded fire bolt 2-649-0166 must be used on fire-rated LBR devices used on a pair of doors to ensure the device's fire rating |

TRIM

- 4500 Series escutcheon trim is offered with a variety of lever options
- Pull plate trim (excluding 45PT)
- Vandal resistant
- Rim cylinder x optional pull

FINISHES

- US3, US4, US10B, US26, US26D, US32D, BLK
- Trim is not available in US32D
- Anti-Microbial available with US26D, US32D

4500 Series - Grade 1 Surface Vertical Rod/LBR Devices - Electrified

WARRANTY

- One-year on electrified components
- Lifetime on hardware components

FEATURES

Same as 4500 Series SVR Device

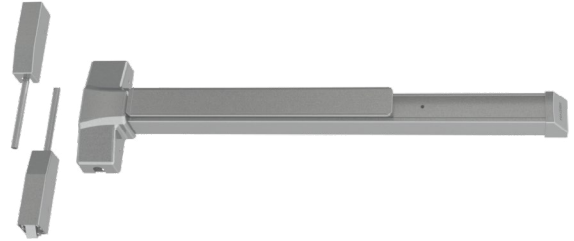
SPECIFICATIONS

Door Width:

- 36" (914 mm) field sizeable to 30" (762 mm) panic-rated door and 28" (711 mm) fire-rated door for devices with any monitoring switches
- 48" (1219 mm) field sizeable to 36" (914 mm) panic- or fire-rated door for devices with any monitoring switches
- 36" (914mm) field sizeable to 34" (864mm) door minimum for devices with motorized electric latch retraction or delayed egress
- 36" (914mm) door minimum for devices with alarm kit, delayed egress, or onboard delayed egress
- 48" (1219mm) field sizeable to 42" (1067mm) door minimum for devices with alarm kit
- 48" (1219mm) field sizeable to 40" (1016mm) door minimum for devices with motorized electric latch retraction
- 48" (1219mm) door minimum for devices with delayed egress or onboard delayed egress

FUNCTIONS

- RX - Request to Exit (field installation kit 2-649-5001)
- RX2 - Dual Request to Exit
- ALK - Alarm Kit (kit 4940)
- ALM - Alarm Kit with Latch Monitor Switch (2-649-0168)
- ALT - Alarm Kit with Tamper Switch (2-649-1090)
- ALL - Alarm Kit with Latch Monitor and Tamper Switch
- AI - Authorized Ingress
- RXAI - Request to Exit with Authorized Ingress
- LM - Latchbolt Monitor
- RXLM - Request to Exit with Latchbolt Monitor
- MLR - Motor Driven Electric Latch Retraction (field installation kit 2-649-5007)
- MLRX - Motor Driven Electric Latch Retraction with Request to Exit
- MLRXLM - Motor Driven Electric Latch Retraction w/Request to Exit and Latchbolt Monitoring
- MLRLM - Motor Driven Electric Latch Retraction w/Latchbolt Monitoring
- DE - Delayed Egress (must order wall mount controller 2-679-0630 separately) Onboard
- OBDE - Delayed Egress (requires Mortise Cylinder 3902 1-1/8" - 1 3/8" length, 3978 Cloverleaf or equivalent tailpiece required)



Electrical Specifications and Wire Requirements - See 4500 Series Electric Modifications page 20.

4500 Series - Grade 1 Concealed Vertical Rod

WARRANTY

Lifetime warranty

FEATURES

| | |
|----------------|---|
| Certification: | BHMA Certified Grade 1 and meets life safety codes and fire-safety requirements. |
| Covers: | Stainless steel, zinc |
| Cover Tube: | Aluminum |
| Dogging: | <ul style="list-style-type: none"> • Hex key dogging standard on panic-rated devices • Less dogging available on panic-rated devices, specify LD • Cylinder dogging is available on panic-rated devices, specify CD (3902 mortise cylinder with standard cam sold separately. Cylinder Length of 1-1/8" (29mm) - 1-3/8" (35mm) is required.) |
| End Caps: | <ul style="list-style-type: none"> • Zinc • OPTIONAL Flush end cap (Zinc) |
| Fasteners: | <ul style="list-style-type: none"> • Wood and machine screws • Thru-bolts supplied standard |
| Latchbolt: | <ul style="list-style-type: none"> • Top - 1/2" (13 mm) throw, pullman type with automatic dead-latching, stainless steel • Bottom - 1/2" (13 mm) throw, pullman type, held retracted during door swing, stainless steel |
| Strikes: | <ul style="list-style-type: none"> • Stainless steel with stainless steel pin and rollers - included standard with panic device • Solid stainless steel - included standard with fire-rated device • Top strike mortised into frame • Double door strike for use with CVR and RIM device available |



SPECIFICATIONS

| | |
|-----------------|--|
| Door Thickness: | 1-3/4" (44 mm) - Standard |
| Door Width: | <ul style="list-style-type: none"> • 36" (914 mm) field sizeable to 30" (762 mm) panic-rated door and 28" (711 mm) fire-rated door • 48" (1219 mm) field sizeable to 36" (914 mm) panic- or fire-rated door |
| Projection: | <ul style="list-style-type: none"> • 3" (76 mm) in undogged position • 2-5/8" (67 mm) in dogged position |
| Vertical Rods: | <ul style="list-style-type: none"> • Rods for 7' (2134 mm) doors - 34-5/8" (879 mm) top rod length • Rods for 8' (2438 mm) and 10' (3048 mm) doors - 46-5/8" (1184 mm) top rod length • Extension rod kits available, 2' (610 mm) or 3' (914 mm) for doors over 7' |
| Stile Width: | <ul style="list-style-type: none"> • 4" (102 mm) minimum stile width required • All stile widths are measured from door edge |
| Notes: | <ul style="list-style-type: none"> • NOT recommended for doors with inset greater than 1/8", for example: double egress frames, or jamb depths over 5-3/4" or greater - for additional information, contact Hager Companies • Center line prep is 40" (1016 mm) - if door prep elevation is lower, a longer top rod will need to be ordered • Recommended for use on appropriately reinforced doors |

TRIM

- 4500 Series escutcheon trim is offered with a variety of lever options (pp. 22-23)
- Vandal resistant
- Rim cylinder x optional pull

FINISHES

- US3, US4, US10B, US26, US26D, US32D, BLK
- Trim is not available in US32D
- Anti-Microbial available with US26D, US32D

4500 Series - Grade 1 Concealed Vertical Rod - Less Bottom Rod (CLB)

WARRANTY

Lifetime warranty

FEATURES

Certification:

BHMA Certified Grade 1 and meets life safety codes and fire-safety requirements.

Covers:

Stainless steel, zinc

Cover Tube:

Aluminum

Dogging:

- Hex key dogging standard on panic-rated devices
- Less dogging available on panic-rated devices, specify LD
- Cylinder dogging is available on panic-rated devices, specify CD (3902 mortise cylinder with standard cam sold separately. Cylinder Length of 1-1/8" (29mm) - 1-3/8" (35mm) is required.)

End Caps:

- Zinc
- OPTIONAL Flush end cap (Zinc)

Fasteners:

- Wood and machine screws
- Thru-bolts supplied standard

Latchbolt:

Top - 1/2" (13 mm) throw, pullman type with automatic dead-latching, stainless steel

Strikes:

- Stainless steel with stainless steel pin and roller - included standard with panic device
- Solid stainless steel - included standard with fire-rated device
- Top strike mortised into frame
- Double door strike for use with CVR and RIM device available



SPECIFICATIONS

Door Thickness:

1-3/4" (44 mm) - Standard

Door Width:

- 36" (914 mm) field sizeable to 30" (762 mm) panic-rated door and 28" (711 mm) fire-rated door
- 48" (1219 mm) field sizeable to 36" (914 mm) panic- or fire-rated door

Projection:

- 3" (76 mm) in undogged position
- 2-5/8" (67 mm) in dogged position

Vertical Rods:

- Rods for 7' (2134 mm) doors - 34-5/8" (879 mm) top rod length
- Rods for 8' (2438 mm) and 10' (3048 mm) doors - 46-5/8" (1184 mm) top rod length
- Extension rod kits available, 2' (610 mm) or 3' (914 mm) for doors over 7'

Stile Width:

- 4" (102 mm) minimum stile width required
- All stile widths are measured from door edge

Notes:

- NOT recommended for doors with inset greater than 1/8", for example: double egress frames, or jamb depths over 5-3/4" or greater
- A spring loaded fire bolt 2-649-0166 must be used on fire-rated LBR devices used on a pair of doors to ensure the device's fire rating
- Center line prep is 40" (1016 mm) - if door prep elevation is lower, a longer top rod will need to be ordered
- Recommended for use on appropriately reinforced doors

TRIM

- 4500 Series escutcheon trim for vertical rod device is surface mounted with a variety of lever options (pp. 22-23)
- Pull plate trim (excluding 45PT)
- Vandal resistant
- Rim cylinder x optional pull

FINISHES

- US3, US4, US10B, US26, US26D, US32D, BLK
- Trim is not available in US32D
- Anti-Microbial available with US26D, US32D

4500 Series - Grade 1 Concealed Vertical Rod/CLB Devices - Electrified

WARRANTY

- One-year on electrified components
- Lifetime on hardware components

FEATURES

Same as 4500 Series CVR Device

SPECIFICATIONS

Door Width:

- 36" (914 mm) field sizeable to 30" (762 mm) panic-rated door and 28" (711 mm) fire-rated door for devices with any monitoring switches
- 48" (1219 mm) field sizeable to 36" (914 mm) panic- or fire-rated door for devices with any monitoring switches
- 36" (914mm) field sizeable to 34" (864mm) door minimum for devices with motorized electric latch retraction
- 36" (914mm) door minimum for devices with electric dogging, alarm kit, delayed egress, or onboard delayed egress
- 48" (1219mm) field sizeable to 42" (1067mm) door minimum for devices with electric dogging or alarm kit
- 48" (1219mm) field sizeable to 40" (1016mm) door minimum for devices with motorized electric latch retraction
- 48" (1219mm) door minimum for devices with delayed egress or onboard delayed egress

Notes:

- NOT recommended for doors with inset greater than 1/8", for example: double egress frames, or jamb depths over 5-3/4" or greater
- A spring loaded fire bolt 2-649-0166 must be used on fire-rated LBR devices used on a pair of doors to ensure the device's fire rating

FUNCTIONS

- ED - Electric Dogging
- RX - Request to Exit (field installation kit 2-649-5001)
- RX2 - Dual Request to Exit
- EDRX - Electric Dogging with Request to Exit
- ALK - Alarm Kit (kit 4940)
- ALM - Alarm Kit with Latch Monitor Switch (2-649-0168)
- ALT - Alarm Kit with Tamper Switch (2-649-1090)
- ALL - Alarm Kit with Latch Monitor and Tamper Switch
- AI - Authorized Ingress
- RXAI - Request to Exit with Authorized Ingress
- LM - Latchbolt Monitor
- RXLM - Request to Exit with Latchbolt Monitor
- MLR - Motor Driven Electric Latch Retraction (field installation kit 2-649-5007)
- MLRX - Motor Driven Electric Latch Retraction with Request to Exit
- MLRXLM - Motor Driven Electric Latch Retraction w/Request to Exit and Latchbolt Monitoring
- MLRLM - Motor Driven Electric Latch Retraction w/Latchbolt Monitoring
- DE - Delayed Egress (must order wall mount controller 2-679-0630 separately) Onboard
- OBDE - Delayed Egress (requires Mortise Cylinder 3902 1-1/8" - 1 3/8" length, 3978 Cloverleaf or equivalent tailpiece required)



Electrical Specifications and Wire Requirements - See 4500 Series Electric Modifications page 20.

4500 Series - Grade 1 Mortise Device

WARRANTY

Lifetime warranty

FEATURES

| | |
|----------------|---|
| Certification: | BHMA Certified Grade 1 and meets life safety codes and fire-safety requirements. |
| Covers: | Stainless steel, zinc |
| Cover Tube: | Aluminum |
| Dogging: | <ul style="list-style-type: none"> • Hex key dogging standard on panic-rated devices • Less dogging available on panic-rated devices, specify LD • Cylinder dogging is available on panic-rated devices, specify CD (3902 mortise cylinder with standard cam sold separately. Cylinder Length of 1-1/8" (29mm) - 1-3/8" (35mm) is required.) |
| End Caps: | <ul style="list-style-type: none"> • Zinc • OPTIONAL Flush end cap (Zinc) |
| Fasteners: | <ul style="list-style-type: none"> • Wood and machine screws • Thru-bolts supplied standard |
| Latchbolt: | 3/4" (19 mm) throw with anti-friction tongue, all stainless steel with auxiliary deadlocking latch |
| Strikes: | 4-7/8" (124 mm) ASA strike-standard |



SPECIFICATIONS

| | |
|-----------------|---|
| Door Thickness: | 1-3/4" (44 mm) - Standard |
| Door Width: | <ul style="list-style-type: none"> • 36" (914 mm) field sizeable to 30" (762 mm) panic-rated door and 28" (711 mm) fire-rated door • 48" (1219 mm) field sizeable to 36" (914 mm) panic- or fire-rated door |
| Projection: | <ul style="list-style-type: none"> • 3" (76 mm) in undogged position • 2-5/8" (67 mm) in dogged position |
| Stile Width: | <ul style="list-style-type: none"> • 4-1/2" (114 mm) • All stile widths are measured from door edge. |
| Notes: | Recommended for use on appropriately reinforced doors |

TRIM

- 4500 Series escutcheon trim for mortise device is available with a variety of lever options (p. 24) (3902, 1-5/8" cylinder with standard cam sold separately)
- Mortise cylinder (1-3/8") with cylinder collar (11/16") x optional pull
- Mortise trim (45MB, 45MC, 45MD, 45MN) does not match center line of other 4500 Series trim (45BE, 45CE, 45DT, 45NL)

FINISHES

- US3, US4, US10B, US26, US26D, US32D, BLK
- Trim is not available in US32D
- Anti-Microbial available with US26D, US32D

4500 Series - Grade 1 Mortise Device - Electrified

WARRANTY

- One-year on electrified components
- Lifetime on hardware components

FEATURES

Same as 4500 Series Mortise Device

SPECIFICATIONS

Door Width:

- 36" (914 mm) field sizeable to 30" (762 mm) panic-rated door and 28" (711 mm) fire-rated door for devices with any monitoring switches
- 48" (1219 mm) field sizeable to 36" (914 mm) panic- or fire-rated door for devices with any monitoring switches
- 36" (914mm) field sizeable to 34" (864mm) door minimum for devices with motorized electric latch retraction
- 36" (914mm) door minimum for devices with alarm kit, delayed egress or onboard delayed egress
- 48" (1219mm) field sizeable to 42" (1067mm) door minimum for devices with alarm kit
- 48" (1219mm) field sizeable to 40" (1016mm) door minimum for devices with motorized electric latch retraction
- 48" (1219mm) door minimum for devices with delayed egress or onboard delayed egress

FUNCTIONS

- ELEU - Electrified Mortise Exit Device - provides means of locking/unlocking outside lever trim control remotely
- RX - Request to Exit
- RX2 - Dual Request to Exit
- ALK - Alarm Kit (kit 4940 • ALM - Alarm Kit with Latch Monitor Switch (2-649-0168)
- ALT - Alarm Kit with Tamper Switch (2-649-1090)
- ALL - Alarm Kit with Latch Monitor and Tamper Switch
- MLR - Motor Driven Electric Latch Retraction (field installation kit 2-649-5007)
- MLRX - Motor Driven Electric Latch Retraction with Request to Exit
- DE - Delayed Egress (must order wall mount controller 2-679-0630 separately)
- OBDE - Onboard Delayed Egress (requires Mortise Cylinder 1-1/8" - 1 3/8" length, 3978 Cloverleaf or equivalent tailpiece required)



Electrical Specifications and Wire Requirements - See 4500 Series Electric Modifications page 20.

4500 Series - Dummy Push Pad

WARRANTY

Lifetime warranty

FEATURES

| | |
|-------------------------------|--|
| Application: | For use with 4500 and 4600 Series Exit Devices |
| Cover Tube: | Aluminum |
| End Caps: | <ul style="list-style-type: none">• Zinc• Flush end cap option available |
| Fasteners: | <ul style="list-style-type: none">• Wood and machine screws• Thru-bolts supplied standard |
| Available Electric Functions: | <ul style="list-style-type: none">• RX - Request to Exit• RX2 - Dual Request to Exit |



SPECIFICATIONS

| | |
|-----------------|--|
| Door Thickness: | 1-3/4" (44 mm) - Standard |
| Door Width: | <ul style="list-style-type: none">• 36" (914 mm) field sizeable to 27" (686 mm) door• 48" (1219 mm) field sizeable to 36" (914 mm) door |
| Projection: | 2-5/8" (67 mm) |
| Stile Width: | <ul style="list-style-type: none">• 2-1/8" (54 mm) - minimum stile width• All stile widths are measured from door edge |
| FINISHES | <ul style="list-style-type: none">• US3, US10B, US26D, US32D, BLK• Anti-Microbial available with US26D, US32D |

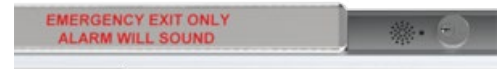
4500 Series - 4940 Alarm Kit

WARRANTY

- One-year on electrified components
- Lifetime on hardware components

SPECIFICATIONS

| | |
|----------------|---|
| Battery: | <ul style="list-style-type: none"> • Standard 9-Volt battery required • Audible chirp and alternating LED color flash when battery is low |
| Alarm: | 100 decibel horn sounds immediately upon pressing push pad |
| Cylinder: | <ul style="list-style-type: none"> • 1-1/8" or 1-1/4" Mortise cylinders acceptable • Hager standard cam required • Cylinder sold separately |
| Activation: | <ul style="list-style-type: none"> • Alarm is armed by turning key clockwise • Alarm is disarmed by turning the key counter-clockwise • Alarm is turned to service mode by turning the key counter-clockwise twice |
| Alarm Timing: | <ul style="list-style-type: none"> • Alarm will sound for either 1, 3, 5 minutes or continuously • Times are selectable by on board switches |
| Warning Decal: | "Emergency Exit Only – Alarm Will Sound" on push pad of exit device |
| Indicator: | <ul style="list-style-type: none"> • LED Indicator • Red LED will illuminate intermittently when armed • Green LED will illuminate when unarmed • Blue LED will illuminate in service mode • Alternate colors flash when battery is low |
| Options: | <ul style="list-style-type: none"> • Tamper switch available that sounds alarm when end cap is removed • Latch monitor switch is available that sounds alarm when latch is retracted without actuating the push pad • Latch monitor switch typically used with Surface Vertical Rod devices • When utilizing the latch monitor, the outside trim unit will also sound alarm |
| Output: | Alarm is equipped with output port |



4500 Series - Electric Modifications

| FUNCTION | # | DESCRIPTION |
|---|--------|--|
| Request to Exit | RX | Used to shunt an alarm, activate an alarm, provide release of magnetic locks, or signal a console. |
| Dual Request to Exit | RX2 | Features two SPDT switches |
| Latchbolt Monitoring | LM | An internal SPDT switch that monitors the latchbolt to signal both egress and access of an opening. |
| Latchbolt Monitoring/ Request to Exit | RXLM | Two internal SPDT switches that monitor the latchbolt and the pushbar simultaneously. |
| Electric Trim | ET | Provides the means of locking or unlocking outside lever trim controls remotely. Trim works with both 12V or 24V and is field-selectable between Fail Safe (EL) or Fail Secure (EU). |
| Authorized Ingress/Key Monitoring | AI | An internal SPDT switch that monitors the operation of the outside trim. Must be ordered with the device. |
| Request to Exit/ Authorized Ingress | RXAI | Two internal SPDT switches that monitor the pushbar and the outside trim simultaneously. Must be ordered with the device. |
| OnBoard Delayed Egress | OBDE | Delays egress for 15 seconds (30 seconds optional) when unauthorized egress is initiated. Modification can be made to 4501 exit devices. |
| Delayed Egress | DE | Delays egress for 15 or 30 seconds when unauthorized egress is initiated. Wall mount controller (2-679-0630) provides digital countdown display with verbal instructions or alarm tone only and must be ordered separately. |
| Motor Driven Electric Latch Retraction | MLR | Provides the means of locking or unlocking exit devices remotely using an electric motor. Recommend Hager 2903 or 2904 Power Supply. |
| Motor Driven Electric Latch Retraction with Request to Exit | MLRX | Provides the means of locking or unlocking exit devices remotely using an electric motor, along with an SPDT switch. Recommend Hager 2903 or 2904 Power Supply. |
| Motor Driven Electric Latch Retraction with Request to Exit and Latchbolt Monitoring | MLRXLM | Provides the means of locking or unlocking exit devices remotely using an electric motor along with two internal SPDT switches that monitor the pushbar and latchbolt simultaneously. Recommend Hager 2903 or 2904 Power Supply. |
| Motor Driven Electric Latch Retraction with Latchbolt Monitoring | MLRLM | Provides the means of locking or unlocking exit devices remotely using an electric motor along with an internal SPDT switch that monitors the latchbolt. Recommend Hager 2903 or 2904 Power Supply. |
| Electrified Mortise Exit Device | ELEU | Provides the means of locking or unlocking outside lever trim controls remotely. Field selectable between Fail Safe (EL) or Fail Secure (EU). Works with both 12V and 24V. |

ELECTRICAL SPECIFICATION/RATINGS AND WIRE REQUIREMENTS

Electrical Specification/ Ratings:

- RX or LM; 125 VAC (3 AMP current); 30 VDC (2 AMP current)
- MLR; 1 AMP in rush @ 24 VDC +/- 2V, 400 mA holding
- DE; Single, 430 mA, Tandem 680 mA @ 24 VDC
- OBDE; Single, 540 mA; Tandem 790 mA @ 24 VDC
- ELEU; 12 or 24V, 250 mA Inrush, 10mA Holding

Wire Requirements:

- Status switches (i.e. RX, LM, etc.) require 2 wires per switch to monitor a normally open (NO) or normally closed (NC) position
- All devices provide 3 wires per switch so both NO and NC positions can be monitored
- Monitoring both positions will require 3 wires per switch

QUICK CONNECT

Available on AI, ED, LM, MLR, and RX

POWER SUPPLIES

For power supply options see electrified section.

ALARMED DEVICES - SPECIFY WHEN ORDERING (Note: Alarm kit components may be purchased separately)

ALK - Alarm Kit

ALM - ALK with latch monitor switch (recommended for use with SVR devices)

ALT - ALK with tamper switch

ALL - ALK with latch monitor and tamper switch

4500 Series - Escutcheon Trim - For 4500 Rim & Vertical Rod Devices

WARRANTY

- One-year on electrified components
- Lifetime on hardware components

SPECIFICATIONS

Escutcheon: 2-7/8" x 10-3/4" (73 mm x 273 mm)

Notes:

- Cannot be used with 4500 Series Mortise exit device
- 45BE, 45CE, 45DT, 45NL trim does not match centerline of 4500 Series Mortise trim (45MB, 45MC, 45MD and 45MN)

LEVERS

Archer, August, Charles, Johnston, Joshua, Louis, Warren, William or Withnell Levers

FINISHES

US3, US4, US10B, US26, US26D (Not Available in US32D), BLK
Anti-Microbial available on US26D



45BE Blank Escutcheon

ANSI Function: 14 - Always operable (passage)



45CE Cylinder Escutcheon (Free-wheeling when locked)

ANSI Function: 08 - Key locks or unlocks lever

Cylinder: Requires 3902 mortise cylinder with standard cam (sold separately)



45DT Dummy Trim

ANSI Function: 02 - Pull when device is dogged down



45NL Night Latch

ANSI Function: 03 - Key retracts latchbolt

Cylinder: Requires 3901 rim cylinder with long tailpiece (sold separately)



45ET Electrified Trim (Free-wheeling when locked)

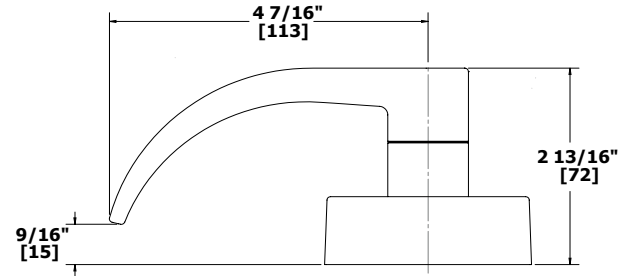
ANSI Function: 45ET ELEU 12/24V - Electric Trim (Fail Safe/Fail Secure)

Cylinder: Requires 3902 mortise cylinder, 1-1/4" with standard cam (sold separately)

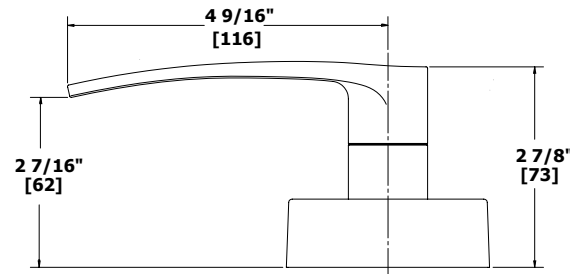
Electrical Specifications and Wire Requirements - See 4500 Series Electric Modifications page 20.

4500 Series - Escutcheon Trim - Lever Options for 4500 Rim & Vertical Rod Devices

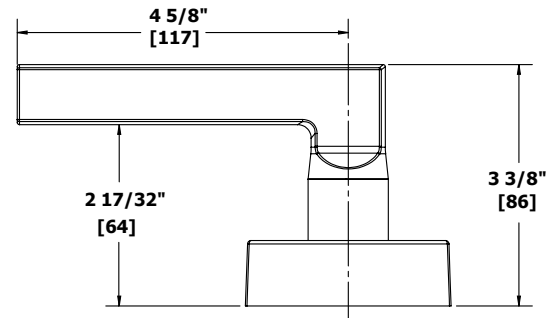
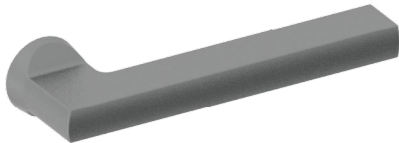
ARCHER LEVER



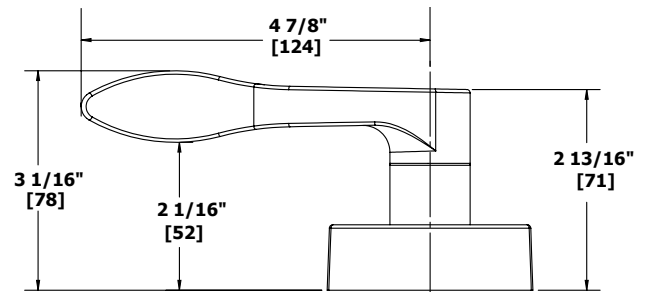
AUGUST LEVER



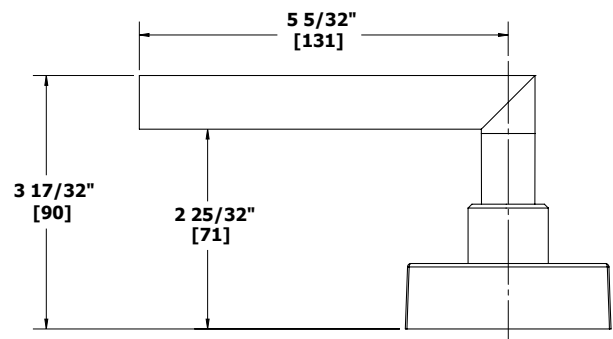
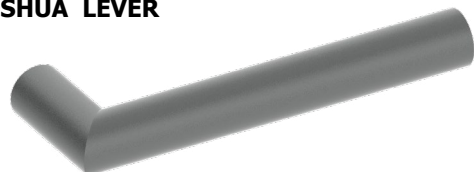
CHARLES LEVER



JOHNSTON LEVER - HANDED

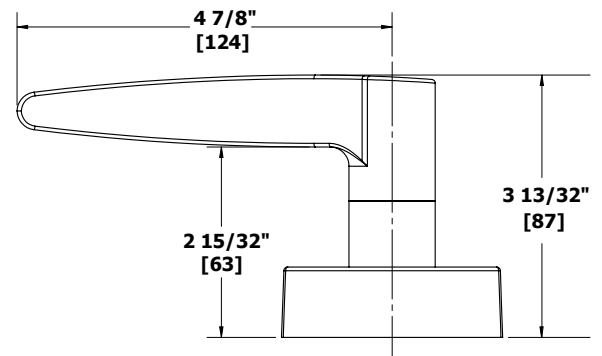
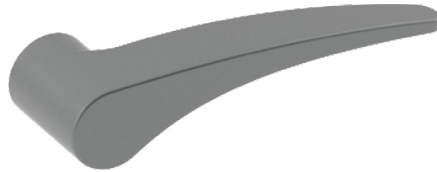


JOSHUA LEVER

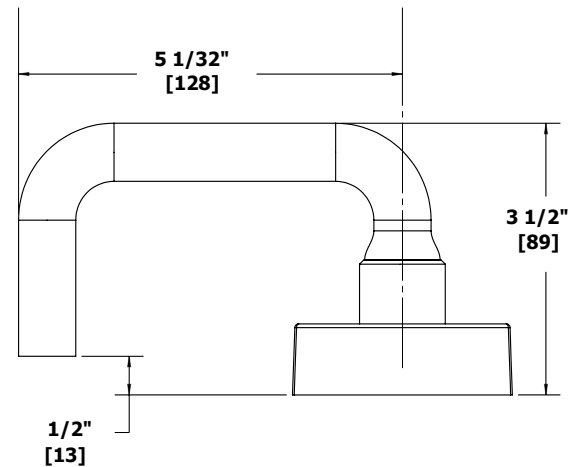
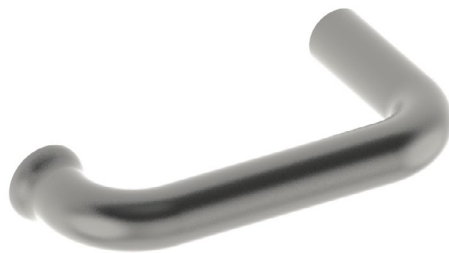


4500 Series - Escutcheon Trim - Lever Options For 4500 Rim & Vertical Rod Devices

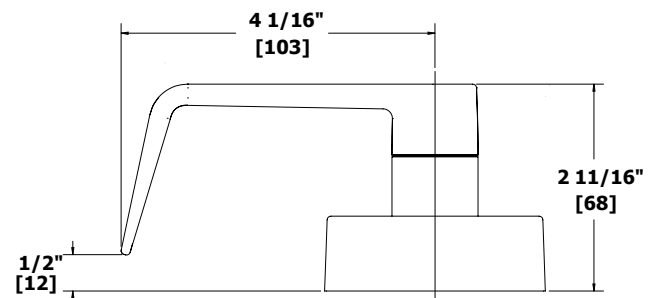
WARREN LEVER - HANDED



WILLIAM LEVER



WITHNELL LEVER



4500 Series - Escutcheon Trim - For 4500 Mortise Device

WARRANTY

- Lifetime on hardware components

SPECIFICATIONS

Escutcheon:

2-15/16" x 10" (75 mm x 254 mm)

Notes:

- Cannot be used with 4500 Series Rim or Vertical Rod devices
- Mortise trim (45MB, 45MC, 45MD, 45MN) does **not** match center line of other 4500 Series trim (45BE, 45CE, 45DT, 45NL)

LEVERS

Archer, August, William or Withnell Levers

FINISHES

- US3, US4, US10B, US26, US26D, (Not Available in US32D), BLK
- Anti-Microbial available with US26D



45MB

Blank Escutcheon - For Use with 4501M Mortise Exit Device

ANSI Function: 14 - Always operable (passage)



45MC

Cylinder Escutcheon - For Use with 4501M Mortise Exit Device

ANSI Function: 08 - Key locks or unlocks lever (free-wheeling when locked)

Cylinder: Requires 3902, 1-5/8" mortise cylinder with standard cam (sold separately)



45MD

Dummy Trim - For Use with 4501M Mortise Exit Device

ANSI Function: 02 - Pull when device is dogged down



45MN

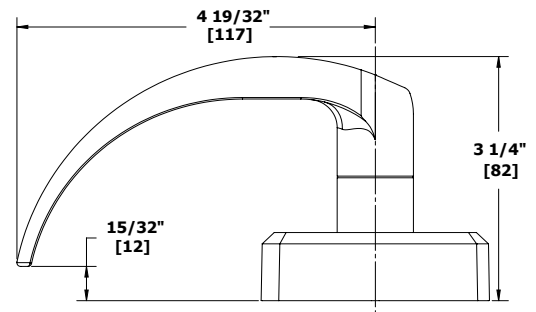
Night Latch - For Use with 4501N Mortise Exit Device

ANSI Function: 03 - Key retracts latchbolt

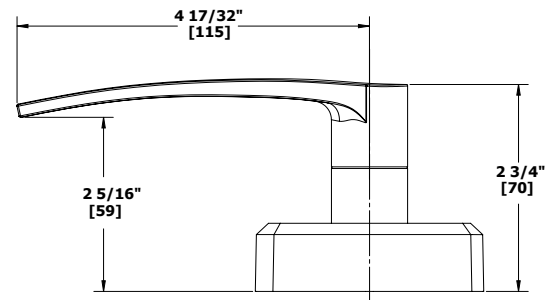
Cylinder: Requires 3902, 1-5/8" mortise cylinder with standard cam (sold separately)

4500 Series - Escutcheon Trim - Lever Options for 4500 Mortise Device

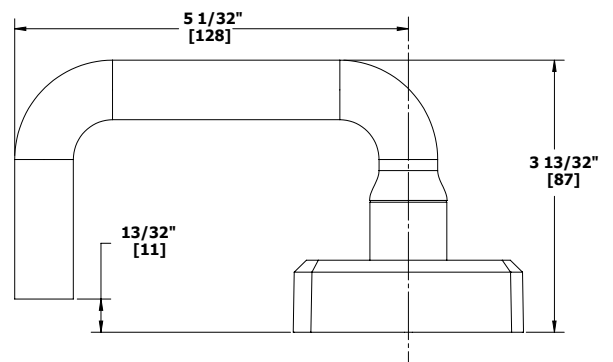
ARCHER LEVER



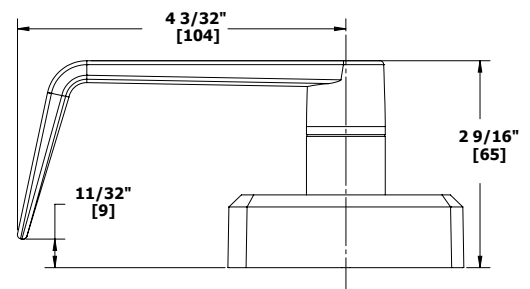
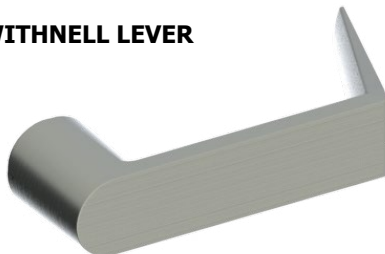
AUGUST LEVER



WILLIAM LEVER



WITHNELL LEVER



4500 Series - Pull Plate Trim

SPECIFICATIONS (45PD, 45PN, 45PT)

| | |
|-------------|---------------------------|
| Plate: | 3" x 14" (76 mm x 356 mm) |
| Projection: | 1-3/4" (44 mm) |
| Pull CTC: | 5-1/2" (140 mm) |



45PD

Dummy Trim

ANSI Function:

Finishes:

Notes:

02 - Pull when device is dogged down

US3, US4, US10B, US26, US26D, US32D

• For use with 4500 RIM, SVR, LBR, CLB devices, not for use with CVR

• Anti-Microbial available with US26D, US32D



45PN

Night Latch

ANSI Function:

Finishes:

Cylinder:

Notes:

03 - Key retracts latchbolt

US3, US4, US10B, US26, US26D, US32D

Requires 3901 rim cylinder (sold separately)

• Includes retaining cup for 161 door prep

• For use with 4500 RIM, SVR, LBR, CLB devices, not for use with CVR

• Anti-Microbial available with US26D, US32D



45PT

Thumb Piece Pull Plate Trim

ANSI Function:

Finishes:

Cylinder:

Notes:

05 - Key locks or unlocks thumbpiece

US32D

Requires 3902 mortise cylinder with standard cam (sold separately)

For use with 4500 Rim exit only, not for use with vertical rod devices



313S

Anti Vandal Pull

Certification:

Size:

Projection:

Clearance:

Door Thickness:

Materials:

Finishes:

Fasteners:

Options:

Cylinder:

Meets ANSI A156.6 for J401 Pull and J407 Pull Plate

6-11/32" x 11" (161 mm x 280 mm)

1-7/8" (48 mm)

1-5/8" (41 mm)

1-3/4" - 2" (45 mm - 51 mm)

11 gauge stainless steel

US32D

Thru bolts directly to device

• Cylinder cutout available 1-1/4" (32 mm) dia. standard for exit device, specify handing

Cylinder and cylinder collar must be ordered separately

• Requires 2-649-0137 7/16" cylinder collar with 3901 rim cylinder 1-1/4"- 1-3/8" long
(see instructions for more detail)

Notes:

Available with latchguard (specify 313L)



RIM Cylinder by Optional Pull

ANSI Function:

Finishes:

Cylinder:

Notes:

03 - Key retracts latchbolt

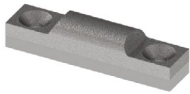
US3, US4, US10B, US26, US26D, US32D, BLK

Requires 3901 rim cylinder (sold separately). Long tailpiece standard.

• For use with 4500 RIM, SVR, LBR, CLB devices, not for use with CVR

• For pull options see Trim & Auxiliary section

4500 Series - Strikes



4915

Threshold Strike

Optional strike for use with surface vertical rod exit device and saddle threshold; not for fire-rated doors

Finishes: US32D



4924

Bottom Strike

Included standard with 4500 Series Vertical Rod exit devices; not for fire-rated doors

Finishes: US32D

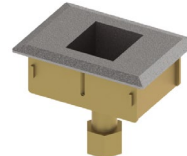


4920

Strike

Included standard with 4500 Series Rim exit devices; not for fire-rated doors

Finishes: US32D



4924F

Fire-rated Bottom Strike

Included standard with fire-rated 4500 Series Vertical Rod exit devices

Finishes: US32D



4920F

Fire-rated Strike

Included standard with fire-rated 4500 Series rim exit devices

Finishes: US32D



4945

Top Strike

Included standard with 4500 Series Concealed Vertical Rod exit devices; not for fire-rated doors

Finishes: US32D



4921

Double Door Strike

Optional strike to be used with 4500 Series Surface Vertical Rod and Rim exit devices; not for fire-rated doors

Finishes: US3, US4, US10B, US26, US32D, BLK



4945F

Fire-rated Top Strike

Included standard with fire-rated 4500 Series Concealed Vertical Rod exit devices

Finishes: US32D

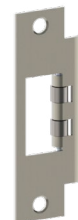


4923

Top Strike

Included standard with 4500 Series Surface Vertical Rod exit devices; not for fire-rated doors

Finishes: US32D



MORTISE EXIT STRIKE

Included standard with 4500 Series Mortise exit device; not for fire-rated doors.

Finishes: US10B (2-649-0440),
US26D (2-649-0441),
US32D (2-649-0442)



4923F

Fire-rated Top Strike

Included standard with fire-rated 4500 Series Surface Vertical Rod exit devices

Finishes: US32D



FIRE-RATED MORTISE EXIT STRIKE

Included standard with fire-rated 4500 Series Mortise exit device.

Finishes: US10B (2-649-0443),
US26D (2-649-0444),
US32D (2-649-0445)

4500 Series - Accessories



4926

Cylinder Dogging Conversion Kit

For use with panic-rated 4500 Series devices

- Finishes: US3, US4, US10B, US26, US26D, US32D, BLK. Anti-microbial available with US26D, US32D.
- Packaging: One (1) each dogging plate, cylinder collar, cash box nut
- Notes:
- Mortise cylinder 3902 with standard cam, sold separately*
 - Specify 36" (914 mm) or 48" (1219 mm)



4927

Bottom Latch Assembly

For use with 4500 Series Surface Vertical Rod exit device

- Description: 1/2" (13 mm) throw, pullman type, held retracted during door swing, stainless steel
- Finishes: US3, US4, US10B, US26, US26D, US32D, BLK
- Packaging: One (1) bottom latch with cover and appropriate fasteners



4928

Top Latch Assembly

For use with 4500 Series Surface Vertical Rod exit device

- Description: 1/2" (13 mm) throw, pullman type, held retracted during door swing, stainless steel
- Finishes: US3, US4, US10B, US26, US26D, US32D, BLK
- Packaging: One (1) top latch with cover and appropriate fasteners



2-649-0250/2-649-0257

Photoluminescent

Push bar cover option for 4500 & 4600 Series exit devices

- Description: 2-649-0250 - 4500/4600 36"
2-649-0275 - 4500/4600 48"
- Features:
- Requires no wiring or maintenance
 - Recharges with exposure to ambient light



4929

Top/Bottom Rod Replacement Kit

For use with 4500 Series Surface Vertical Rod exit device

- Finishes: US3, US4, US10B, US26, US26D, US32D, BLK.
- Packaging: One (1) each 45-1/4" (1149 mm) rod, rod guide, rod connector, and appropriate fasteners

4929C

Concealed Rod Replacement Kit

For use with 4500 or 4600 Series Concealed Vertical Rod exit device

- Material: Hardened aluminum
- Finishes: US26D
- Packaging: One (1) each 46-5/8" (1184 mm) rod, rod connector and appropriate fasteners

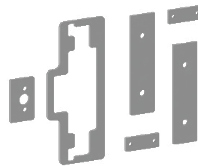


4930R

Shim Kit

For use with 4500 Series Rim exit devices where a glass bead kit would interfere with exit device

- Finishes: US3, US4, US10B, US26, US26D, US32D, BLK
- Packaging: Two (2) each 1/8" (3 mm) shims and appropriate fasteners



4930S

Shim Kit

For use with 4500 Series Surface Vertical Rod exit devices where a glass bead kit would interfere with exit device

- Finishes: US3, US4, US10B, US26, US26D, US32D, BLK
- Packaging: Two (2) each 1/8" (3 mm) shims and appropriate fasteners

4500 Series - Accessories



4932C

Head Cover

For use with 4500 Series Concealed Vertical Rod or Mortise exit devices

Finishes: US3, US4, US10B, US26, US26D, US32D, BLK. Anti-microbial available with US26D, US32D.

Packaging: One (1) head cover and four (4) each M4 x 6mm MS



4932R

Head Cover

For use with 4500 Series Rim exit device

Finishes: US3, US4, US10B, US26, US26D, US32D, BLK. Anti-microbial available with US26D, US32D.

Packaging: One (1) head cover and four (4) each M4 x 6mm MS



4932S

Head Cover

For use with 4500 Series Surface Vertical Rod exit devices

Finishes: US3, US4, US10B, US26, US26D, US32D, BLK. Anti-microbial available with US26D, US32D.

Packaging: One (1) head cover and four (4) each M4 x 6mm MS



4937

36" Extension Rod Kit

For use with 4500 Series Vertical Rod exit devices

Finishes: US3, US4, US10B, US26, US26D, US32D, BLK

Packaging: One (1) each 36" (914 mm) extension rod, rod connector, rod guide, plus wood and machine screws

Notes: Extension rod threaded on both ends; if cuts are required, cut the standard rod on non-threaded end



Standard

END CAPS

For use with all 4500 and 4600 Series exit devices

Finishes: US3, US4, US10B, US26, US26D, US32D, BLK. Anti-microbial available with US26D, US32D

Packaging: One (1) each cap and bracket plus fasteners



Flush

Finishes: US3, US4, US10B, US26, US26D, US32D, BLK. Anti-microbial available with US26D, US32D

Packaging: One (1) each cap and bracket plus fasteners



4936

24" Extension Rod Kit

For use with 4500 Series Vertical Rod exit devices

Finishes: US3, US4, US10B, US26, US26D, US32D, BLK

Packaging: One (1) each 24" (610 mm) extension rod, rod connector, rod guide, plus wood and machine screws

Notes: Extension rods threaded on both ends; if cuts are required, cut the standard rod on non-threaded end



2-649-0166

Fire Bolt Kit

For use with fire-rated 4500 Series Vertical Rod less bottom rod device

Faceplate: 1-25/32" x 1" (45 mm x 25 mm)

Bolt Diameter: 7/16" (11 mm)

Bolt Length: 1-1/2" (38 mm)

Materials: Stainless steel

Packaging: One (1) each fire bolt, plastic plug, head cover plug, and appropriate fasteners

Notes: Required with a fire-rated pair of LBR or LLB devices to ensure rating