



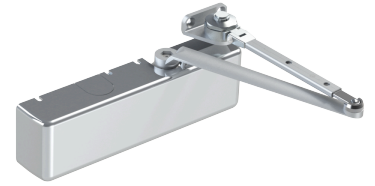
PRODUCT SPECIFICATIONS
For more information visit www.hagerco.com

5100 Closer x Hold Open Arm 5107

5100 Closer x 5107 Hold Open Arm

Applications

Grade 1 Heavy Duty Surface Door Closer adjustable sizes 1-6
Ideal for schools, hospitals, and other high-use environments



PRODUCT SPECIFICATIONS

Arm:

5107 - Hold Open Arm

Box Quantity:

1

Case Quantity:

4

Certifications:

BHMA Certified ANSI A156.4, adjustable sizes 1-6
ADA compliant ANSI A117.1 Accessibility Code
UL/cUL Listed for up to 3 hours
UL10C Positive Pressure Rated
UL10B Neutral Pressure Rated
5100 Door Closer EPD

Cover:

Full plastic cover - standard
Plated metal cover - optional

Door Thickness:

1-3/4" (44 mm) - standard
1-3/8" - 2-1/4" (36 mm - 57 mm) thick door - optional

Fasteners:

Self-reaming, self-tapping wood and machine screws
Sex nuts and bolts

Handing:

Non-handed

Material:

Forged steel arm

Maximum Door Weight:

330 lbs.

Springs:

One piece seamless steel spring tube
Double heat-treated, steel-tempered springs
Precision-machined, heat-treated steel piston

Valves:

Adjustable latching and sweep speed valves
Adjustable backcheck valve - standard
Delayed action valve - optional
Staked valves - standard

Warranty:

Lifetime warranty