



LO-PRO™

Low Profile Lite Kit

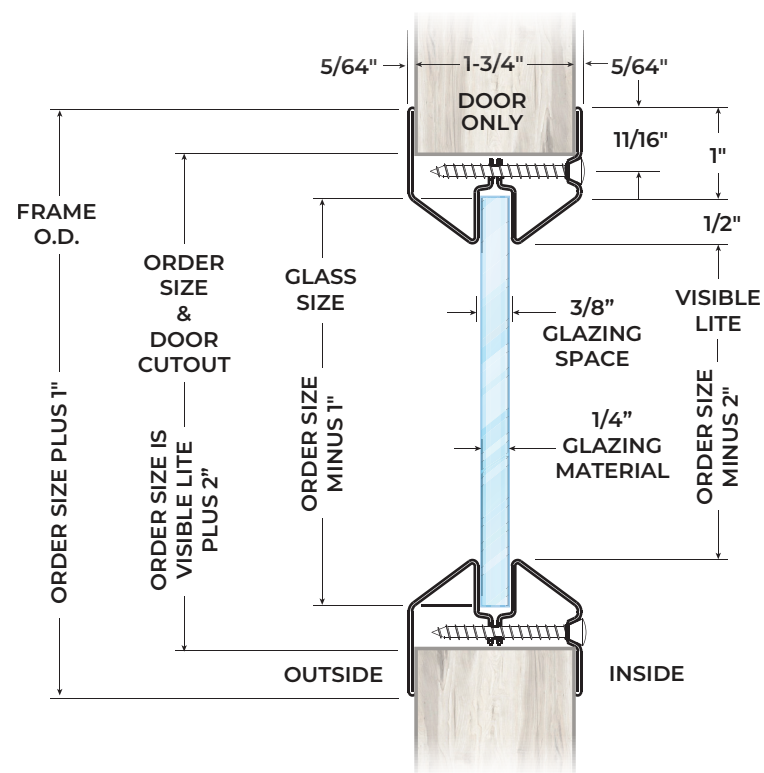
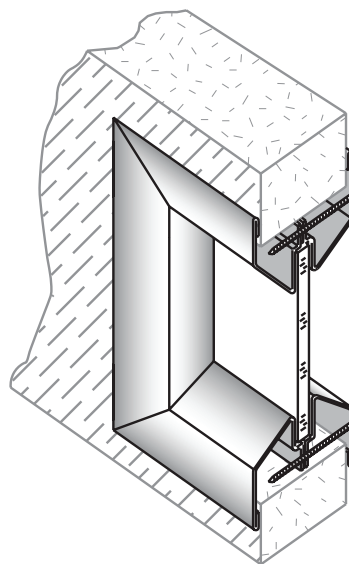
PRODUCT CUT SHEET

For 1 3/4" Thick Doors and 3/16" or 1/4" Glass

- 20 Ga. Cold Rolled Steel
- Mitered and Welded Corners
- Counter-Sunk Mounting Screw-Holes
- #8 X 1 3/4" Phillips Head SMS
- Available in Uneven and Fractional Sizes
- Gray Primer (GPZ) Powder Coat Finish

Available Options

- Powder Coat Color Options - See Color Chart on www.ngp.com
- Torx Security Screws
- Galvanneal - A40 Steel
- Zinc Electro-Plating
- Glass & Glazing Tape - See Glass Section
- Lead Lining - .030" Thick



Designed for Use on 1 3/4" Thick Doors Manufactured Within Door Industry Tolerance of +/- 1/16".

NGP-LIT-LOPRO-PCS-0822-A

Anemostat
DOOR PRODUCTS



EN-1634
European Std.

BS 476.22
British Std.

NGP MEMPHIS
4985 East Raines Road
Memphis, TN 38118
orders@ngp.com

NGP VEGAS
4584 Calimesa Street
Las Vegas, NV 89115
vegasorders@ngp.com

ngp.com
1-800-NGP-RUSH