

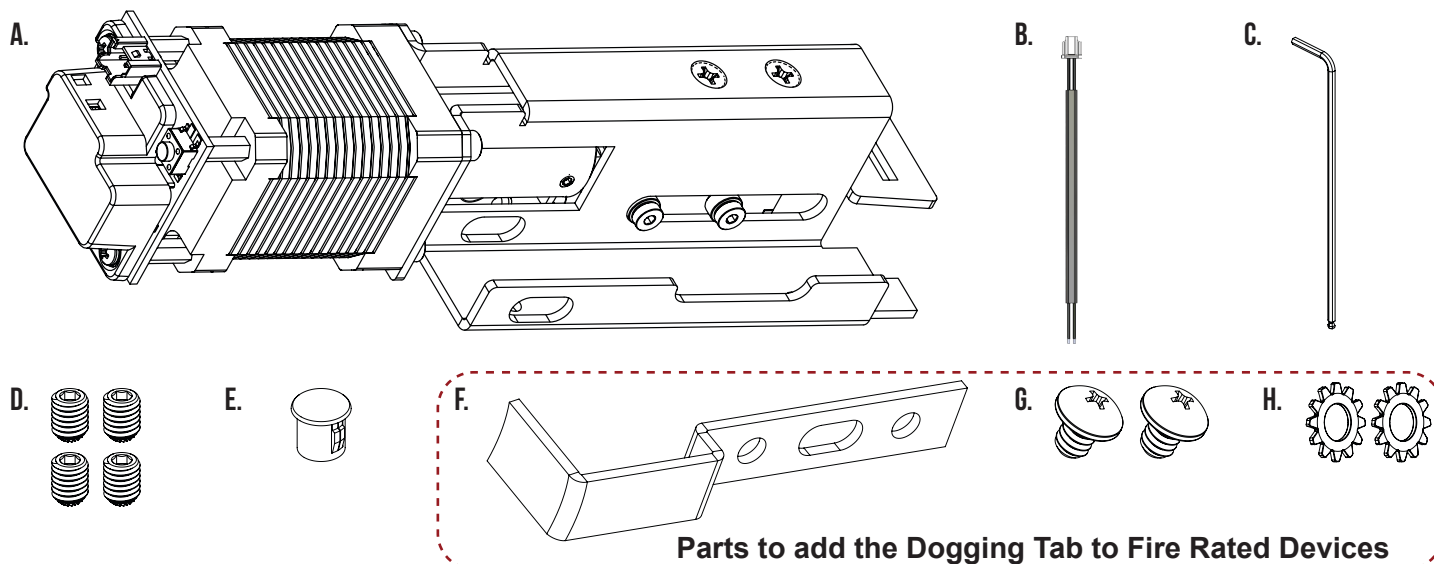
MLRK1-DTX



INSERT INSTRUCTIONS

The Command Access MLRK1 is a field installable motorized latch-retraction kit for:

- MLRK1-DTX - DETEX Advantex Series
- MLRK1-DTX - DETEX Value Series



KIT INCLUDES

- A. (1) 60747 - MLRK1-DTX
- B. (1) 50944 - MOLEX PIGTAIL
- C. (1) 10017 - HEX KEY ALLEN WRENCH 3/32"
- D. (4) 41103 - SET SCREWS (10-32 X 1/4")
- E. (1) 40144 - DOGGING HOLE PLUG
- F. (1) 53023 - DOGGING L BRACKET
- G. (2) 41196 - PAN HEAD SCREWS (10-24 X 1/4")
- H. (2) 41197 - #10 LOCK WASHER



INSTALLATION VIDEO

SPECIFICATIONS

- INPUT VOLTAGE: 24VDC +/- 10%
- AVERAGE LATCH RETRACTION CURRENT: 900 MA
- AVERAGE HOLDING CURRENT: 215 MA
- WIRE GAUGE: MINIMUM 18 GAUGE
- DIRECT WIRE RUN - NO RELAYS OR ACCESS CONTROL UNITS IN-BETWEEN POWER SUPPLY & MODULE

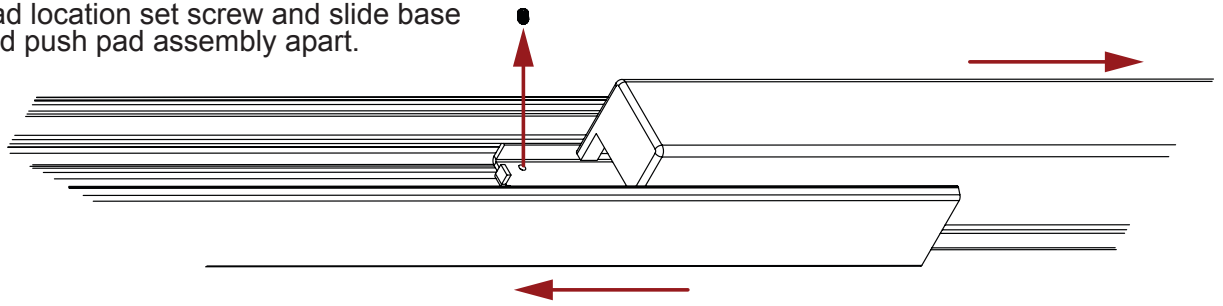
OPTIONAL BUILT-IN REX

- SPDT - RATED .5A @24V
- GREEN= COMMON (C)
- BLUE = NORMALLY OPEN (NO)
- GREY = NORMALLY CLOSED (NC)

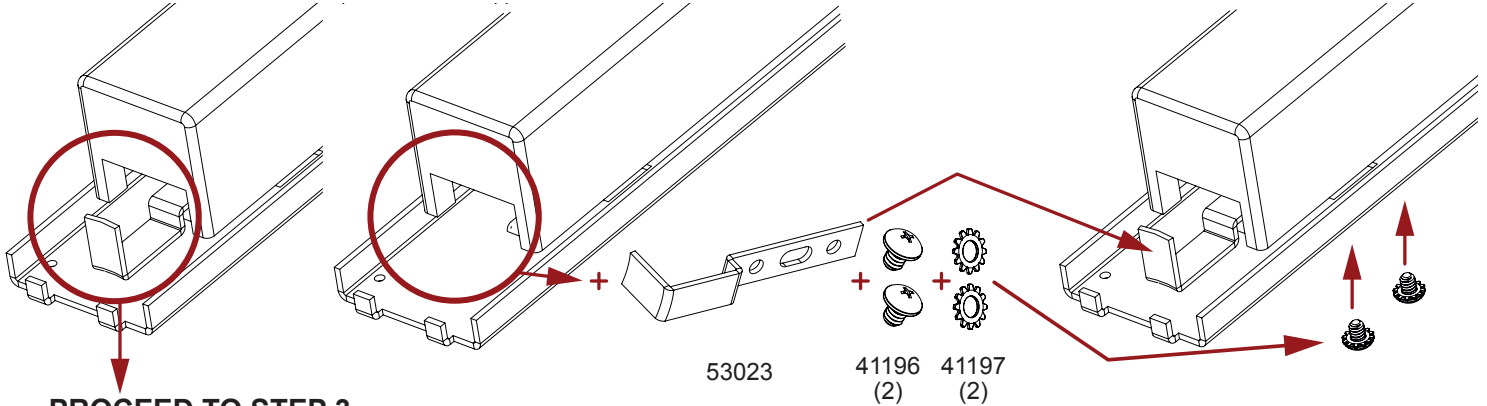
RECOMMENDED POWER SUPPLIES: USE A POWER LIMITED CLASS 2 POWER SUPPLY

ALL COMMAND ACCESS EXIT DEVICES & FIELD INSTALLABLE KITS HAVE BEEN THOROUGHLY CYCLE TESTED WITH COMMAND ACCESS POWER SUPPLIES AT OUR FACTORY. IF YOU PLAN ON USING A NON-COMMAND POWER SUPPLY IT MUST BE A FILTERED & REGULATED LINEAR POWER SUPPLY.

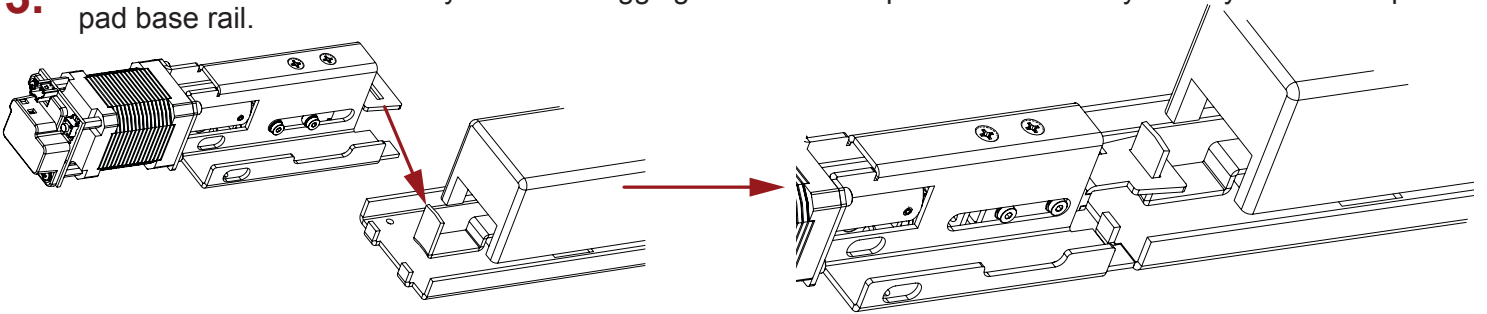
- 1.** Remove pad location set screw and slide base housing and push pad assembly apart.



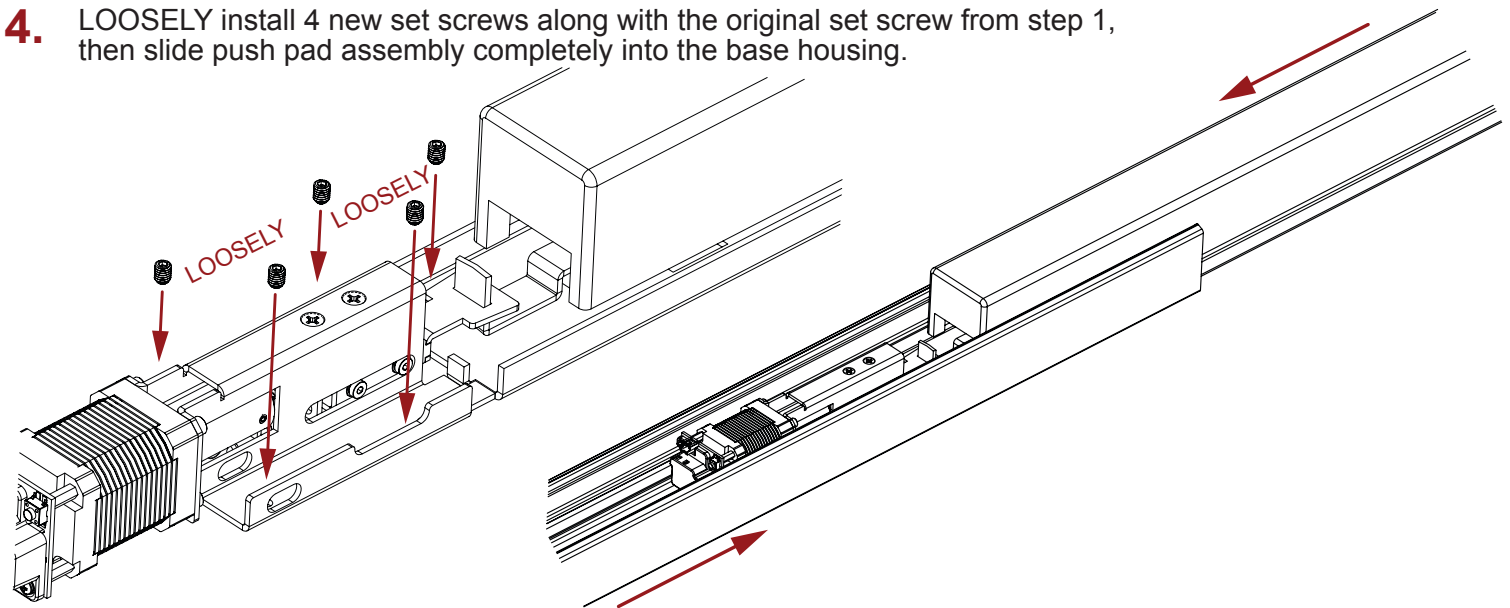
- 2.** If the push pad already has a Dogging L Bracket attached, proceed to step 3.
If not, add the provided Dogging L Bracket with the designated screws and lock washers.



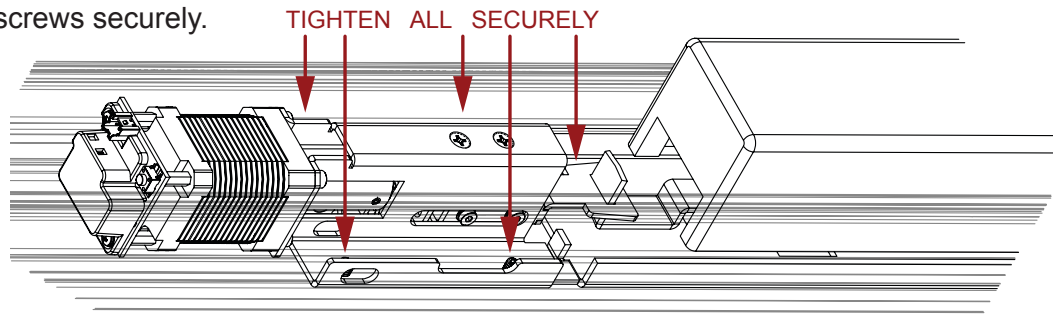
- 3.** Slide front of motor assembly over the Dogging L Bracket and place the assembly directly behind the push pad base rail.



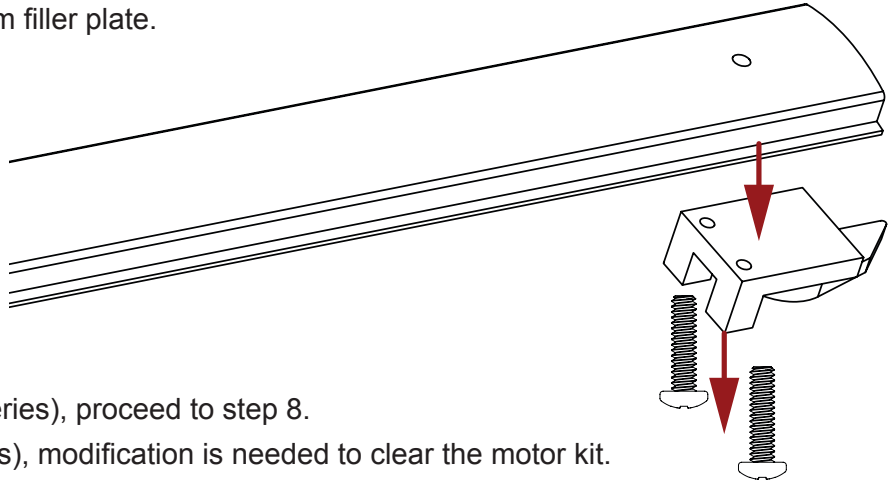
- 4.** LOOSELY install 4 new set screws along with the original set screw from step 1, then slide push pad assembly completely into the base housing.



5. Tighten all 5 set screws securely.



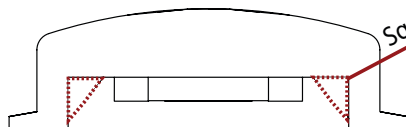
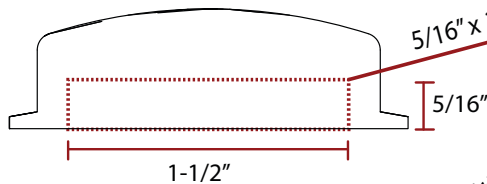
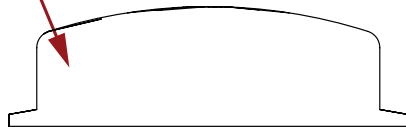
6. Remove Dogging Assembly from filler plate.



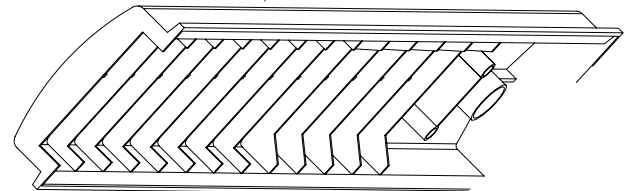
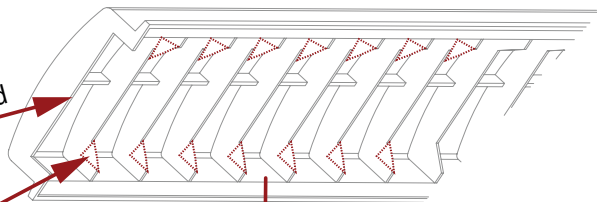
7. If metal filler plate (Advantex Series), proceed to step 8.
If plastic filler plate (Value Series), modification is needed to clear the motor kit.
Modify as shown.



PROCEED
TO STEP 8

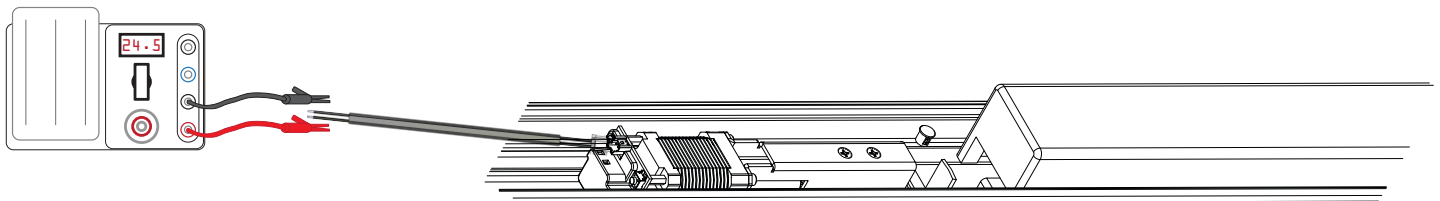


5/16" x 1-1/2" Cutout at Filler Plate End
Square off the first 7 ribs to match cutout

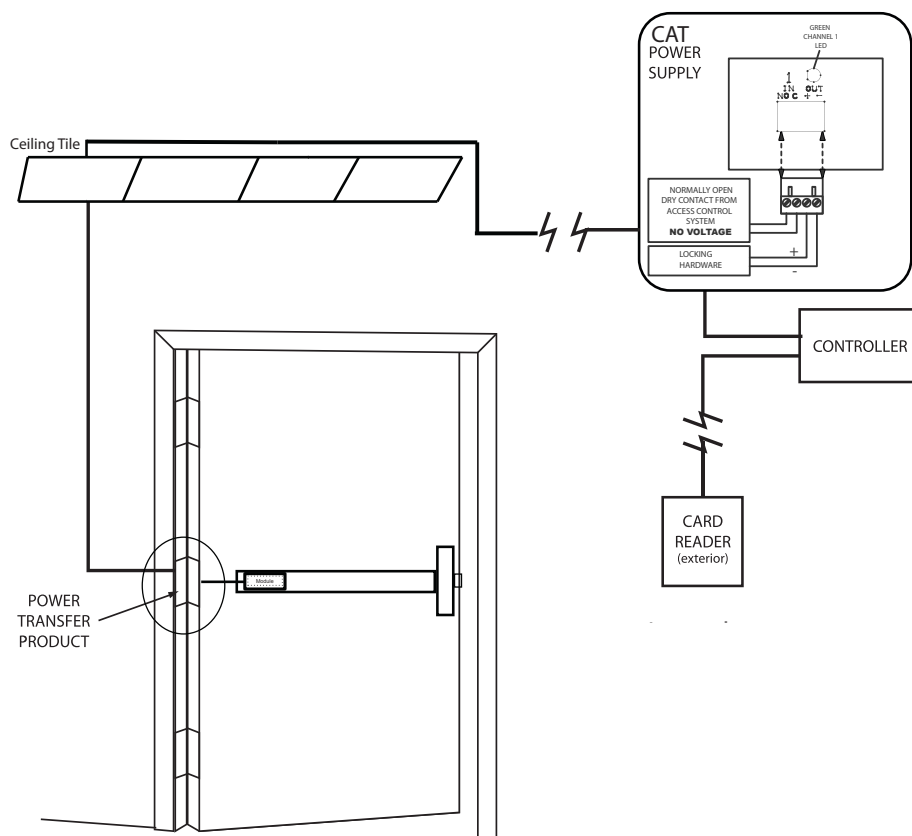


Filler Plate End with 5/16" x 1-1/2" cutout + first 7 ribs are squared off to match

8. Test device. If needed, reset the **Push to Set** positioning following the steps on page 4.



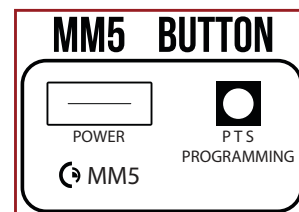
note: To properly clear teh motor, re-install all filler plates w/dogging hole towards the hinge side of the device.



SETTING PUSH TO SET (PTS)

IF NOT RETRACTING TO THE OPTIMAL POSITION, SET PTS AS FOLLOWS

- STEP 1 -** To enter PTS mode: Depress MM5 button & apply power. The device will emit 1 SHORT beep to signal that it is now in PTS mode.
- STEP 2 -** While holding the push pad 95% depressed, apply power (i.e. presenting the credential to the reader). The Device will emit 1 LONG beep to signal that the PTS position has been set. Adjustment is now complete.
- STEP 3 -** Test the new location. If not to your liking repeat the 3 steps, depressing the push pad more or less to achieve your optimal retraction.



TROUBLESHOOTING & DIAGNOSTICS

BEEPS	EXPLANATION	SOLUTION
2 Beeps	Over Voltage	> 30V unit will shut down. Check voltage & adjust to 24 V.
3 Beeps	Under Voltage	< 20V unit will shut down. Check voltage & adjust to 24 V.
4 Beeps	Failed Sensor	Verify all 3 sensor wires are installed correctly. Replace sensor if problem persists by contacting office.
5 Beeps	Retraction or dogging failure	After 1st fail: 5 beeps then immediately attempts to retract again. After 2nd fail: 5 beeps with pause in-between for 30 seconds then device attempts to retract again. After 3rd fail: 5 beeps every 7 minutes, device will not attempt to retract. To Reset: Depress bar for 5 seconds at any time.