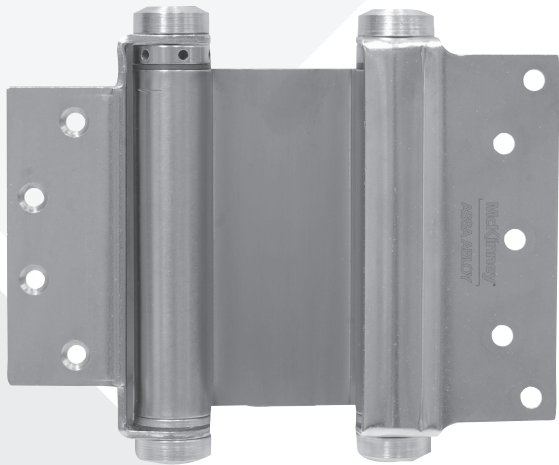


McKinney 1001

Double Acting Spring Hinge



SPECIFICATIONS:

MATERIAL:
Steel

DESCRIPTION:
Double Acting Spring Hinge

FASTENERS:
(9) #6 x 4 1/2" Machine Screws
(9) #12 x 1 1/4" Wood Screws

NOTES:

- Non-template/Non-handed
- Do not use with hinge edge beveled door

SIZE:
6" x 4 1/2"

AVAILABLE FINISHES:

- US26D/652

PACKAGED/WEIGHT:

- 2 ea Per Box
- 12 ea Per Case
- Case Weight-41 lbs

ANSI:
K81151

Specification Schedule for Door 7' High or More

Door Width	Max Door Weight Lbs.*		Lockside Clearance*	
	2 Each	3 Each	Flat Edge	Round Edge
2'0"	96	145	1/4"	1/16"
2'2"	89	135	3/16"	1/16"
2'6"	77	125	3/16"	1/16"
2'8"	72	115	1/8"	1/16"
3'0"	64	105	1/8"	1/16"

*Minimum height for weights shown. Hinge capacity decreases as door height decreases. It is recommended that three hinges be used on door sizes as indicated above.