

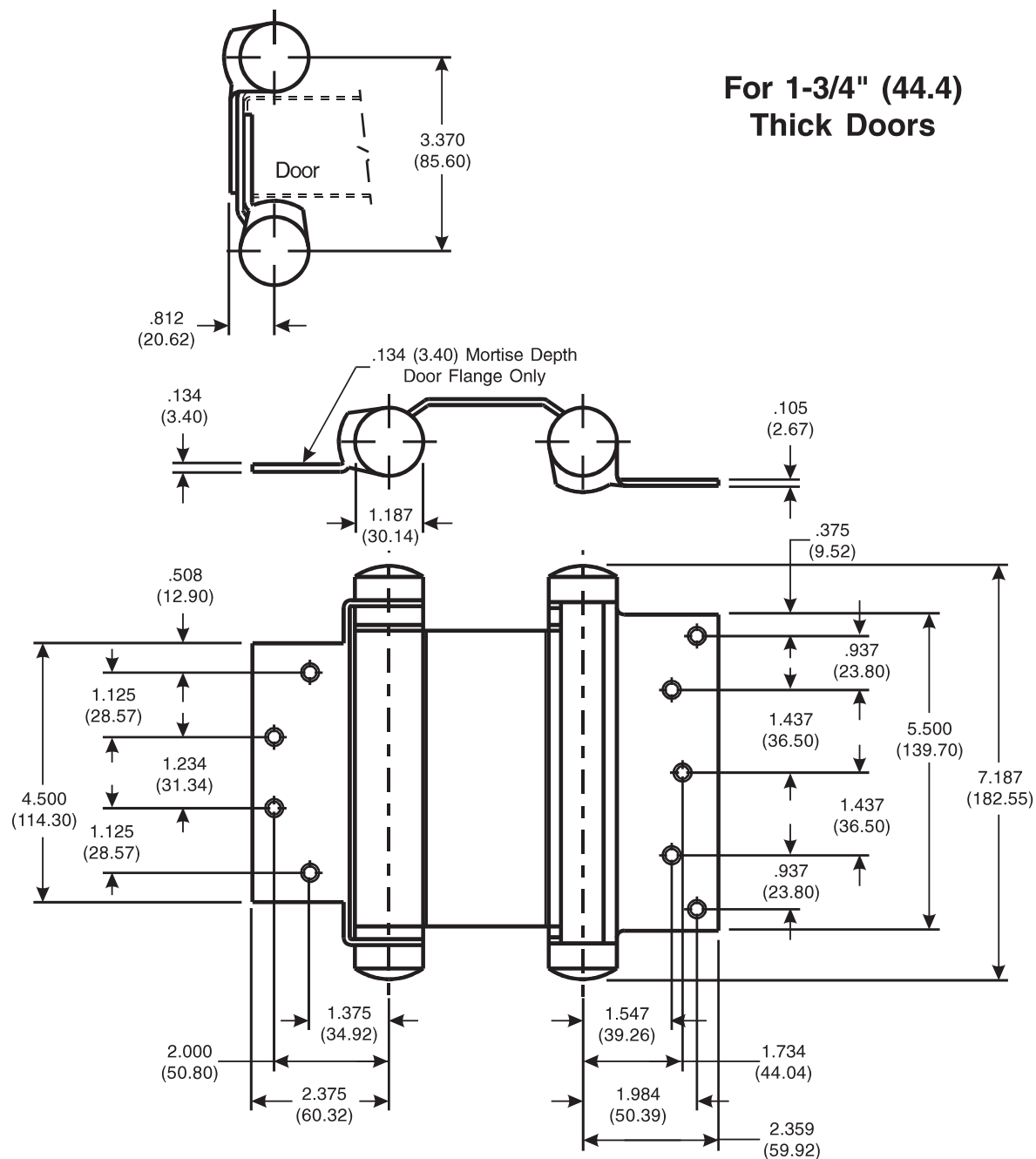
Architectural Door Accessories

ASSA ABLOY

McKinney 6 x 4 $\frac{1}{2}$ " - 1001 Template Full Mortise Double Acting Spring Hinge

The global leader in
door opening solutions

DO NOT SCALE
DIMENSIONS: INCHES (MM)



Template 365-98

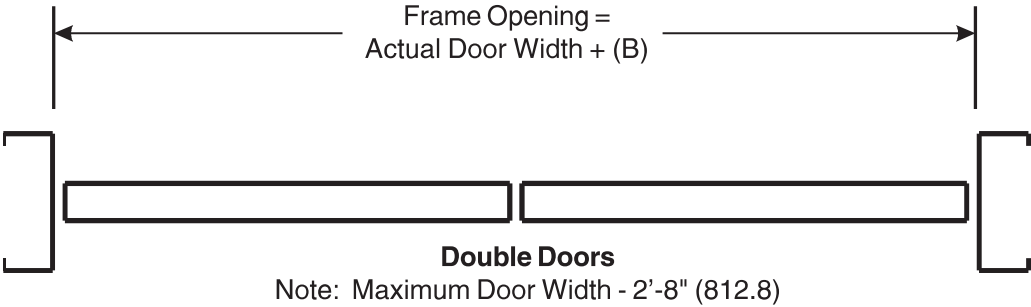
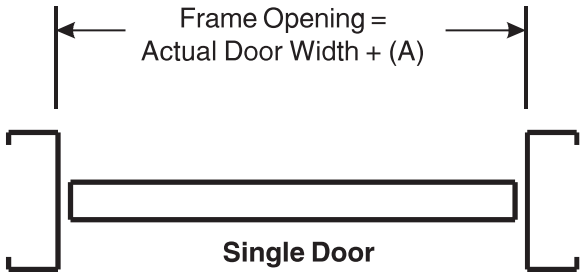
Effective date:
March 30, 1998

Supersedes: All Previous

McKINNEY Template Full
Mortise Double Acting
Spring Hinge is made to
conform to this drawing.

Machine Screw Size:
1/2 x 12-24 F.H.

DO NOT SCALE
DIMENSIONS: INCHES (MM)



Frame Clearances		
Hinge Mounting	Clearance (A)	Clearance (B)
Surface Applied	---	---
Door Flange Mortised	.407 (10.34)	.814 (20.68)

Template
365-98

Effective date:
March 30, 1998

Supersedes: All Previous

- Notes:
- 1. This hinge is not to be used on doors with hinge edge beveled.
 - 2. Refer to catalog for door weight and hinge size.
 - 3. Hinges should be inverted on one door of a pair for proper centering.