

PIVOT HINGE

Pivot sets are designed to work with the laws of physics to provide long-lasting performance and reliability. Offset pivots provide better weight distribution and can accommodate taller doors

The weight of the door is supported at the bottom by the floor

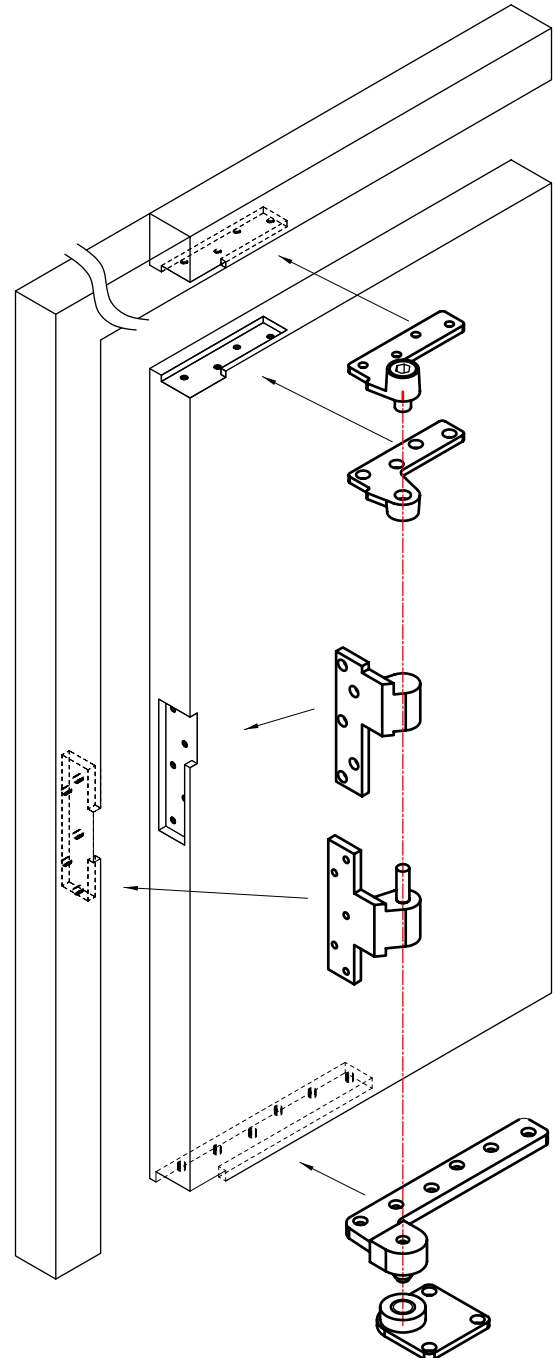
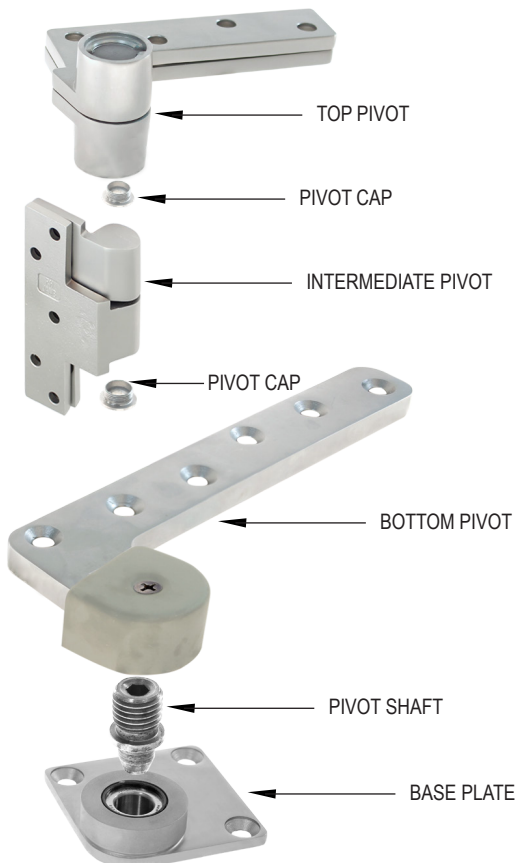
- ▶ Uses principles of gravity to its advantage
- ▶ Door swings with less resistance
- ▶ Heavier doors can be accommodated

Reduced stress on frame

- ▶ Fasteners are in shear, not tension
- ▶ Eliminates door sag
- ▶ Vertically adjustable

Heavy duty hardened steel spindles

- ▶ Thrust bearing supports vertical load
- ▶ Needle bearings and bushings for lateral force
- ▶ Extra heavy-duty models also have an additional surface applied thrust bearing to handle heavier or high-traffic doors



INSTALLATION DIAGRAM

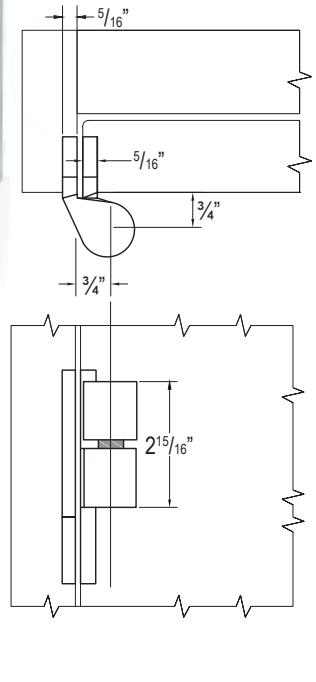
INTERMEDIATE PIVOT

MAIN FEATURES

- ▶ Heavy Duty Full Mortise
- ▶ Handed
- ▶ Maintains door alignment
- ▶ Aids in installing floor closer and bottom pivots
- ▶ Stainless Steel material with high corrosion resistance
- ▶ Door thickness minimum 1 3/4"
- ▶ Maximum door load: 600 pounds
- ▶ Vertical adjustment 3/16" include positive locking



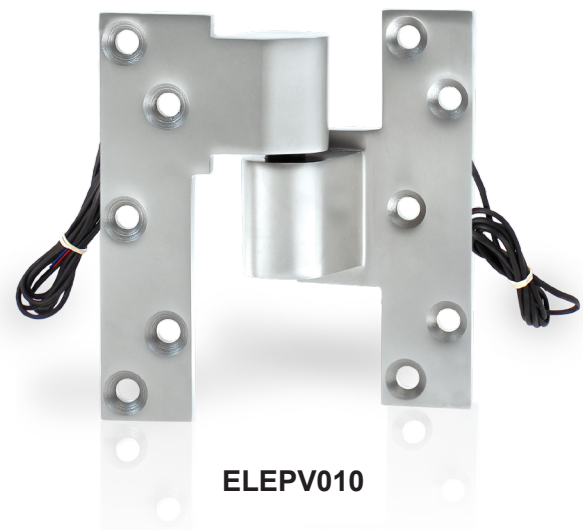
PV010



ELECTRIFICATION

- ▶ For medium and heavy wood and metal doors in high traffic areas
- ▶ **4 wires, 26 gauge**
- ▶ Can be used on exterior and interior doors
- ▶ Can be used with top and bottom pivots
- ▶ Handed
- ▶ Not load bearing
- ▶ Maintains door alignment and aids in installing bottom pivots
- ▶ Doors 60" to 90" in height should use one intermediate pivot
- ▶ Each additional 30" warrants another intermediate pivot
- ▶ Vertical adjustment up to 3/16"
- ▶ Fasteners: 8 pcs wood screws and 8 pcs. machine screws

ITEM #	SIZE	OFFSET	THICKNESS
ELEPV010-RH	5" x 4 1/4"	3/4"	5/16"
ELEPV010-LH	5" x 4 1/4"	3/4"	5/16"



ELEPV010

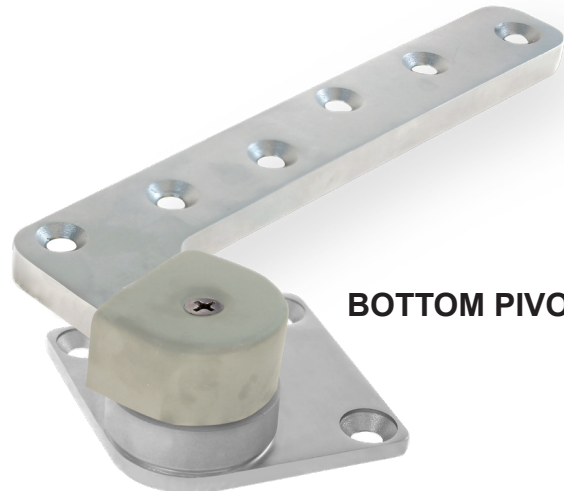
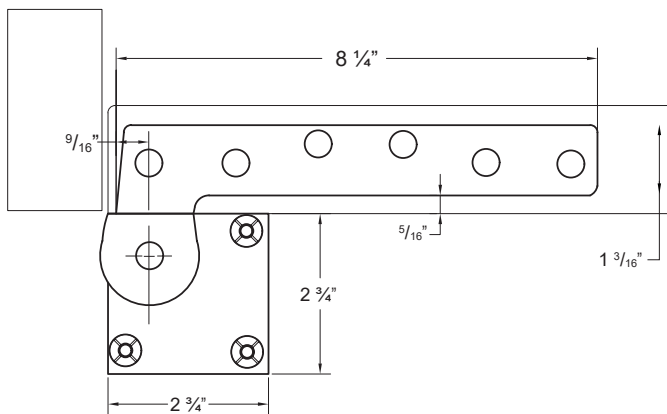
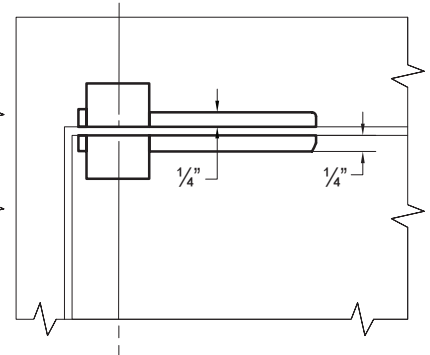
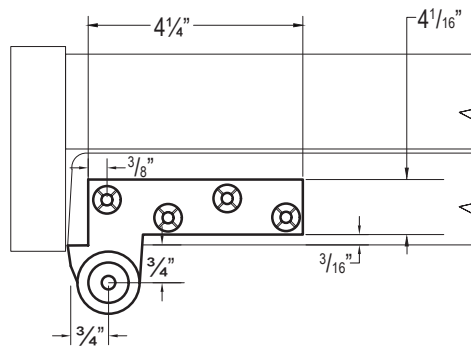
TOP AND BOTTOM OFFSET PIVOT SET PV001

MAIN FEATURES

- ▶ Full Mortise
- ▶ Non-Handed
- ▶ 3/4" Offset pivot
- ▶ Standard top pivot for most offset pivot sets and floor closers
- ▶ Use with 1 3/4" door minimum thickness with 1/8" bevel in 2"
- ▶ Maximum door load: 600 pounds
- ▶ Vertical adjustment range 3/16"
- ▶ Stainless Steel material with high corrosion resistance
- ▶ *Top and bottom pivot is sold as set*



TOP PIVOT



BOTTOM PIVOT

