

Architectural Door Accessories

ASSA ABLOY

Pemko Automatic Door Bottom (ADB)

The global leader in
door opening solutions

Applies to the following automatic door bottom:

420_PKL

Automatic, Non-Handed, Reversible

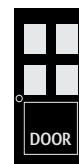
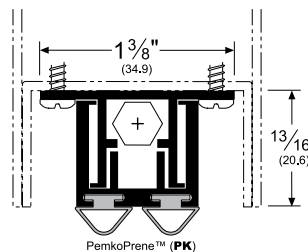
About Door Bottom Seals:

Pemko Door Bottom Seals consist of a variety of solutions for sealing a door to the threshold or floor surface.

About Automatic Door Bottoms:

Pemko automatic door bottoms consist of an aluminum case which surrounds a movable drop bar seal. The drop bar seal is actuated by a plunger which contacts the jamb as the door is closing, forcing the drop bar seal down against the floor or threshold.

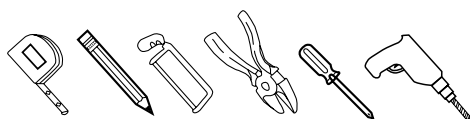
- Low closing force.
- Provide excellent seals to keep out draft, dust, moisture, insects, fumes, light and sound.
- End plates provided for all mounting applications.
- Slotted holes for adjustment.



Product / Available Finishes:

420APKL Mill Finish Aluminum with Black PemkoPrene™ insert

Tools Required:



Parts Included in End Cap Kit:

Testing/Ratings:

Gasketing material for fire doors intended for application to listed steel frames and/or classified steel covered composite type, and hollow metal type fire doors rated up to 3 hours; wood and plastic covered composite type fire doors rated up to 1-1/2 hours; and wood core type fire doors rated up to 20 minutes.

(Thresholds may or may not contain gasketing material).



BHMA
CERTIFIED

CLASSIFIED
UL US
4L10

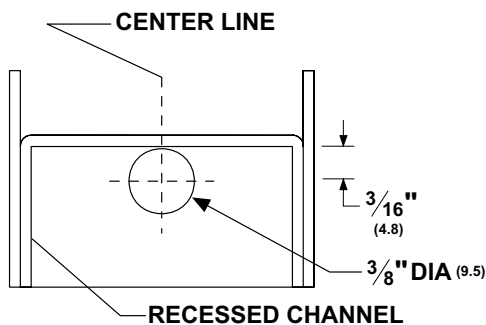
Pemko Automatic Door Bottom (ADB)

The global leader in
door opening solutions

Installation Instructions:

1. Cut mortise in bottom of door if needed. Hollow metal doors may already have an inverted channel. If this is the case, ensure dimensions are compatible.

NOTE: If a door is fire labeled or of special construction, mortise preparation must be done by the door manufacturer.



HOLE LOCATION FOR No. 420 DRILL THROUGH HINGE EDGE

NOTE: The 420 requires a 3/8" diameter hole drilled through the hinge edge of the hollow metal door at the location shown.

2. Cut the ADB to door width (without cutting the gasketing insert).

NOTE: Measure door width from center of bottom rail to compensate for possible bevel edges.

NOTE: Make sure that the drop bar is flush with the case on the plunger side. Do not trim the gasket yet.

WARNING: ADB less than 24" CAN ONLY be cut down by 1/2".

WARNING: ADB 26" and over should NOT be cut down more than 2".

WARNING: ADB should ONLY be cut from non-plunger side.

3. Adjust and trim the gasketing insert so that it fits fully in the case, between the end plates without dragging.
4. With door removed from opening, install the door bottom with plunger at the hinge side.
NOTE: The underside edge of ADB should be flush with bottom of door.
5. Fasten with screws provided.
6. Install door in opening.
7. On wooden jambs, install the No. 10 x 1/2" flat head screw at the point where the plunger contacts the jamb to prevent indenting.
8. Screw the actuating plunger in or out as required until the gasketing just touches the sealing surface when the door is closed.

NOTE: Adjustment range is 1/8" min - 1/2" max

NOTE: Start with the plunger screwed in completely to avoid over adjustment or damage.

WARNING: Do not over adjust the plunger. It is only necessary to lightly compress the insert gaskets against the sealing surface to provide proper sealing. Over adjustment can cause internal component failure voiding the warranty!

WARNING: Do NOT use power tools to adjust the ADB!