

1351

Gate Closer

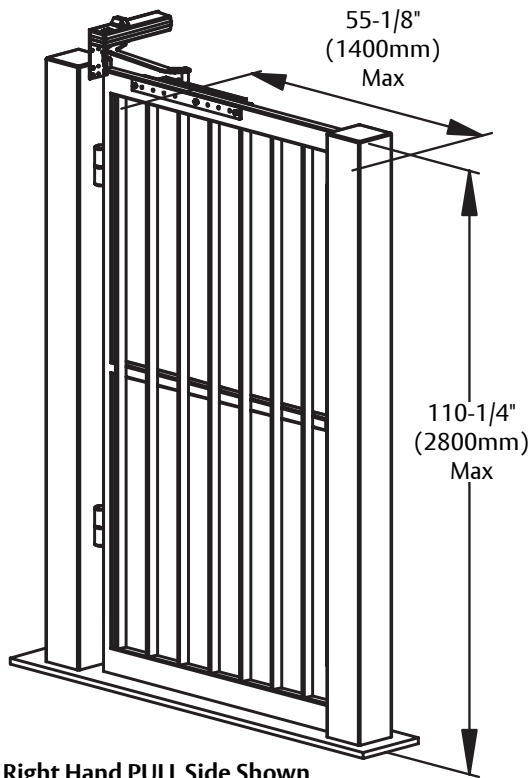
PULL Side Mount ONLY

RIXSON®
ASSA ABLOY

⚠ WARNING

This product can expose you to lead which is known to the state of California to cause cancer and birth defects or other reproductive harm. For more information go to www.P65warnings.ca.gov.

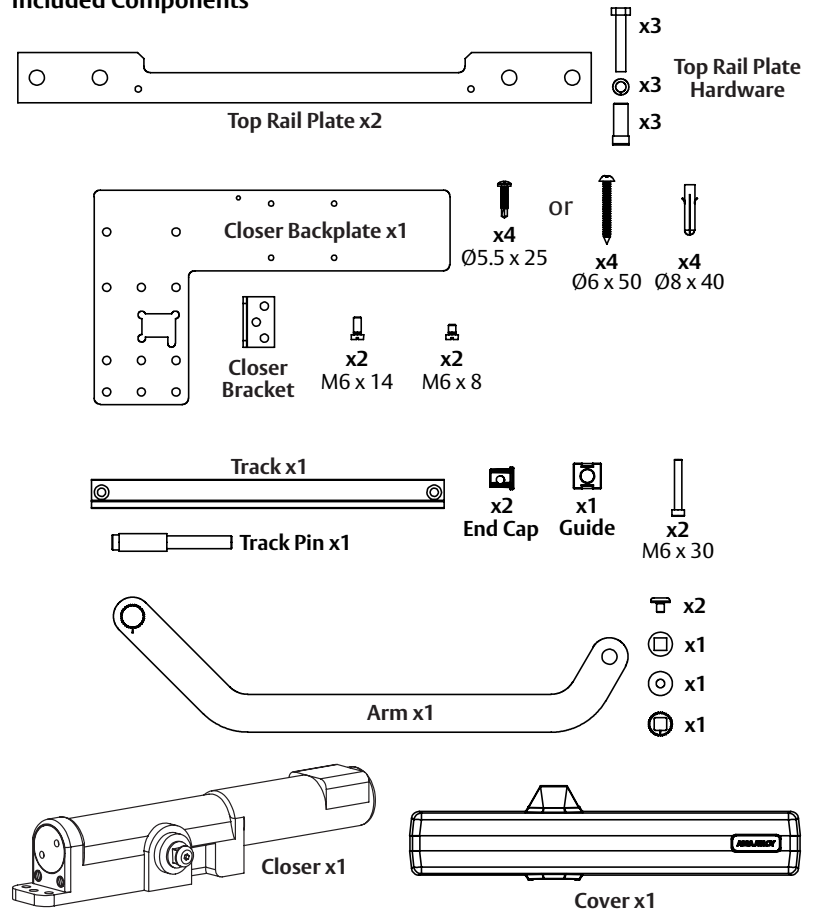
Ce produit peut vous exposer au plomb qui, dans l'état de la Californie, est reconnu pour causer le cancer, des anomalies congénitales ou d'autres problèmes de reproduction. Pour plus d'informations, visitez: www.P65warnings.ca.gov.



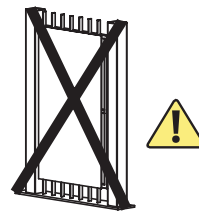
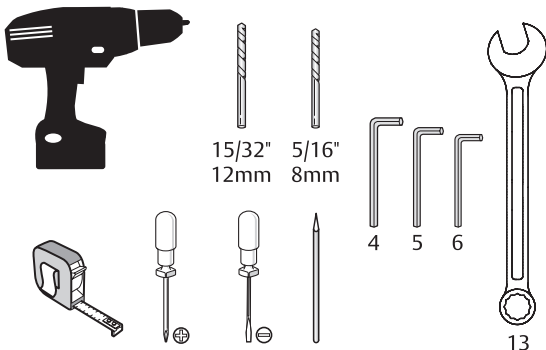
Right Hand PULL Side Shown

Dimensions are given in inches (millimeters).

Included Components



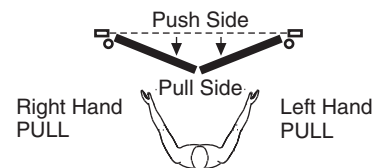
Tools Needed



ATTENTION:

An incorrectly installed or improperly adjusted gate closer can cause property damage or personal injury. These installation instructions should be followed to avoid the possibility of misapplication or misadjustment.

To Determine Your Hand of Door:



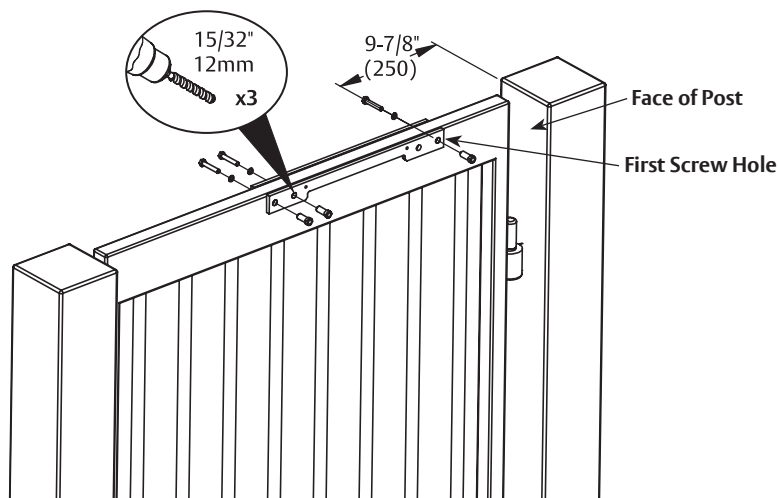
Prepare gate for track.

1. Using one (1) top rail plate as template, position first screw hole of plate so that from face of post to screw is approximately 9-7/8" (250mm ±10).

2. Mark and drill mounting holes with 15/32" drill bit.

NOTE: One (1) mounting hole of plate is not used.

3. Attach plates to both sides of rail with three (3) supplied mounting screws, washers and sleeves as shown.



Prepare post for closer.

1. Slide track onto top rail plate then insert track into closer backplate.



NOTE: Assembling track to gate rail and closer backplate ensures track will be in exact alignment to closer body.

2. Using backplate as a template, mark holes onto post.
3. Mark holes mounting.
4. Secure backplate to post.

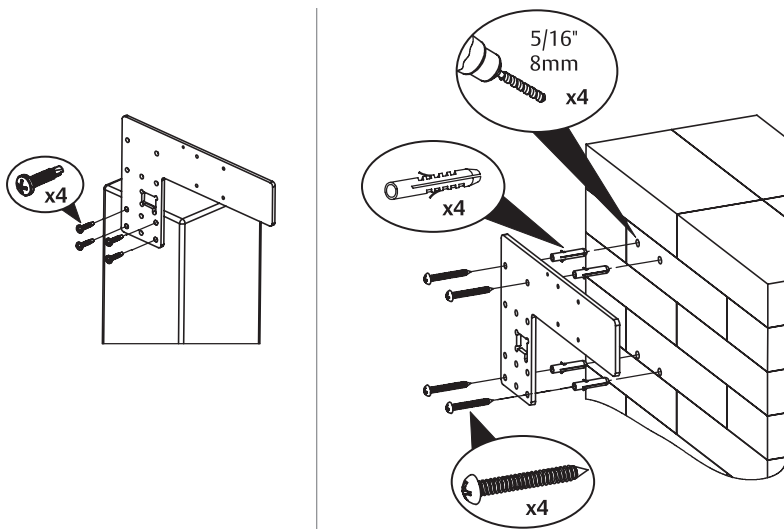
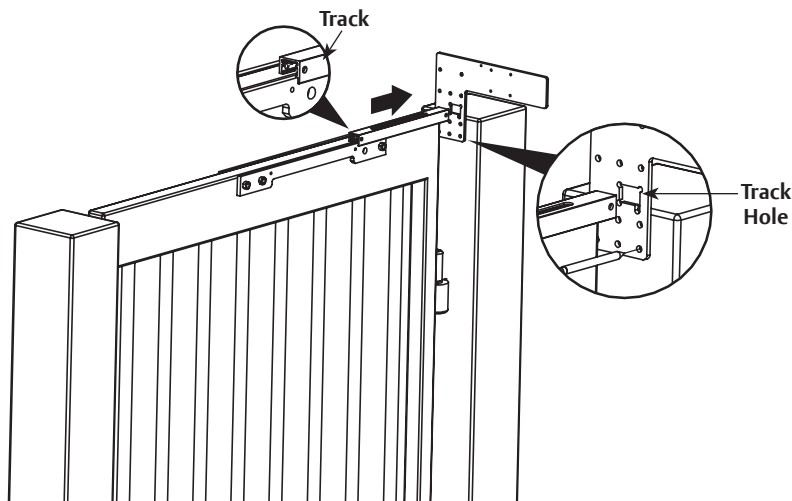
NOTE: Location of mounting holes is based on metal or masonry application.

For Metal Post:

- a. Use supplied four (4) Ø5.5 x 25 mounting screws to secure plate to gate post.

For Masonry Post:

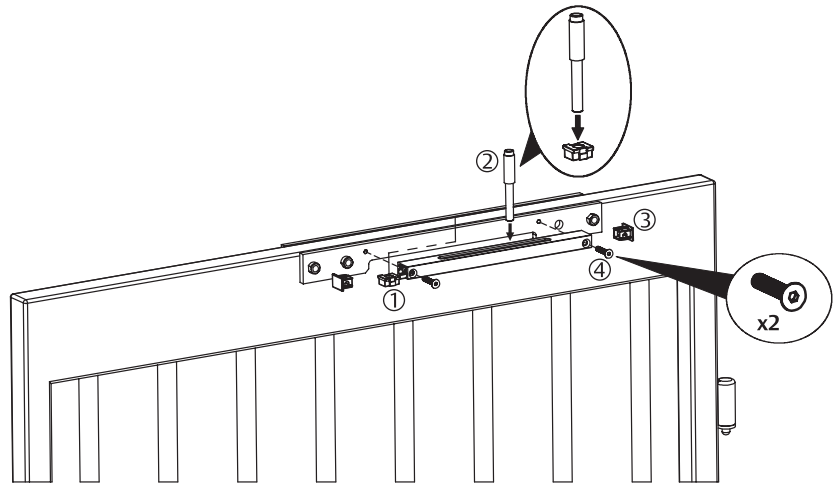
- a. Drill holes using 5/16" drill bit.
- b. Use supplied four (4) Ø6 x 50 mounting screws and Ø8 x 40 sleeves to secure plate to gate post.



1351 Gate Closer (Right Hand from Push Side shown)

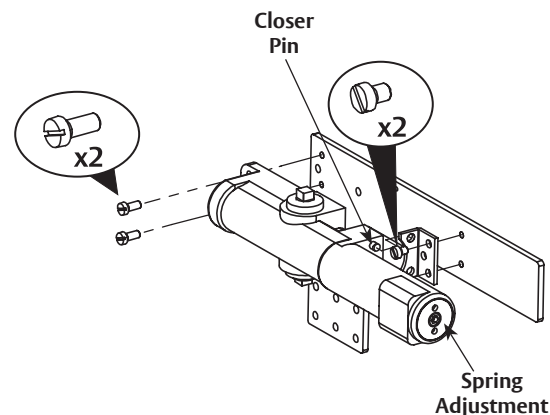
Install track to gate.

1. Insert guide into track.
- NOTE: Track channel is down for proper orientation.**
2. Insert pin into guide.
3. Insert end cap into each end of track.
4. Secure track to push side top rail plate with two (2) M6 x 30 hex head screws.



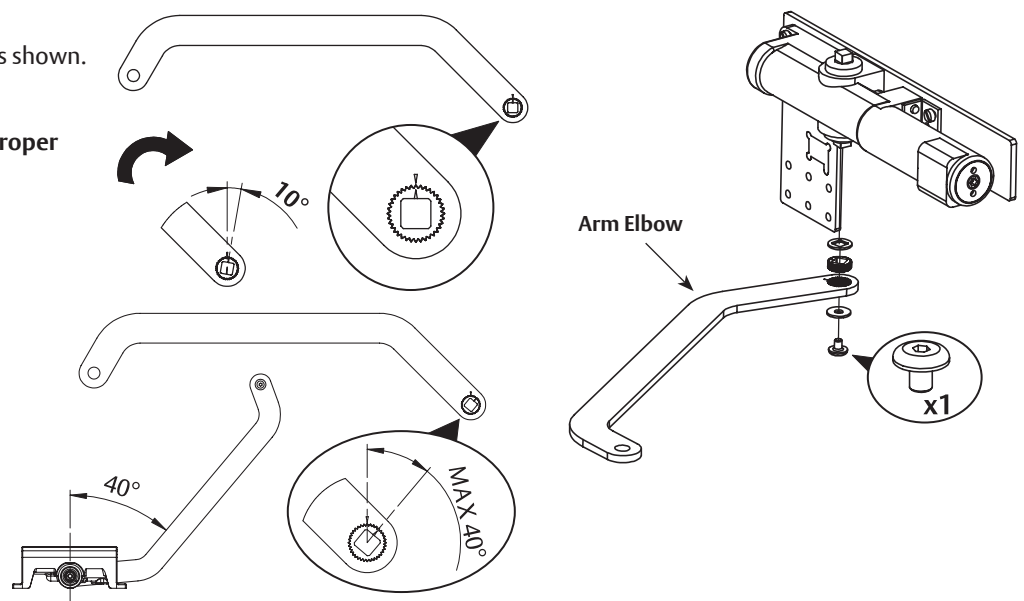
Install closer to backplate.

1. Install closer bracket into backplate using two (2) M6 x 8 screws.
2. Slide closer pins into side bracket holes.
- NOTE: Spring adjustment end of closer is on push side of gate for proper orientation.**
3. Secure closer to backplate with two (2) M6 x 14 screws.



Install arm to closer.

1. Attach arm to closer spindle as shown.
- NOTE: Elbow of arm must be toward pull side of gate for proper orientation.**

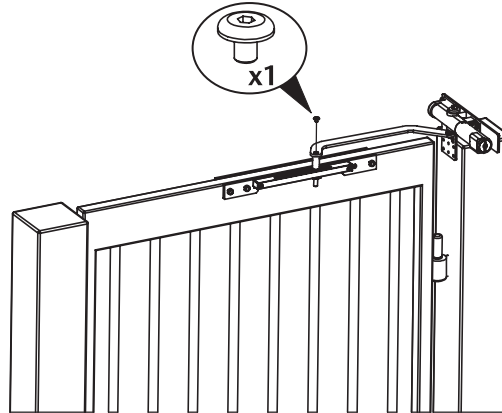


The ASSA ABLOY Group is the global leader in access solutions. Every day we help people feel safe, secure and experience a more open world.

1351 Gate Closer (Right Hand from Push Side shown)

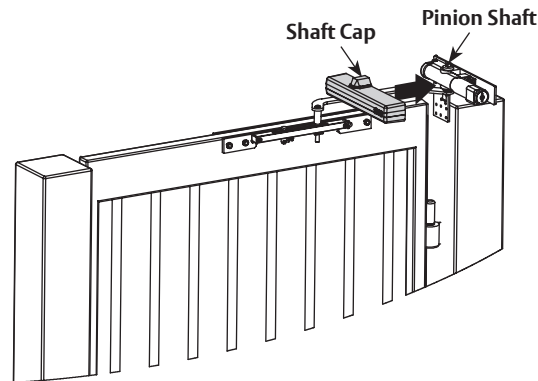
Attach arm to track.

1. Secure arm to track with one (1) hex head screw.



Attach cover

1. Align pinion cap with pinion shaft and snap cover onto closer.



Do not force. Cover should snap on with gentle pressure.

You've now installed the **1351 Gate Closer**.

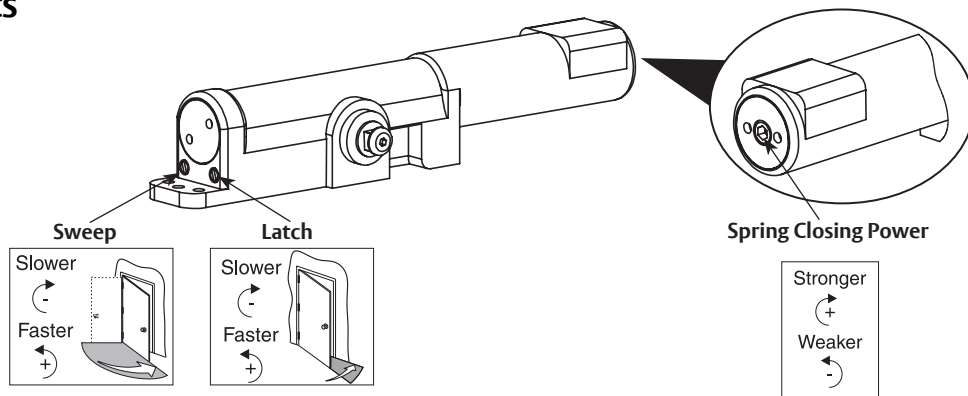
Refer to Closer Adjustments to modify closer action.

Closer Adjustments



Use slotted screwdriver to turn sweep and latch valves. NEVER force valves out of closer.

Use hex wrench to turn spring closer valve. Door must be open.



Rixson Technical Product Support:
Monroe, NC 28112 USA
Phone: 800.438.1951 ext: 6030
TechSupport.Rixson@assaabloy.com
rixson.com

Rixson is a brand associated with ASSA ABLOY Accessories and Door Controls Group, Inc., an ASSA ABLOY Group company. Copyright © 2013, 2020, ASSA ABLOY Accessories and Door Controls Group, Inc. All rights reserved. Reproduction in whole or in part without the express written permission of ASSA ABLOY Accessories and Door Controls Group, Inc. is prohibited.

Approved 2020-09-14