

## Full size interchangeable cores

## Full size interchangeable core (FSIC) applications

A full size interchangeable core (FSIC) is usually manufacturer specific and cannot interchange with competitive cores.



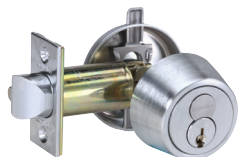
**A Series**  
Orbit design



**AD Series**  
all designs



**AL Series**  
Saturn design  
Jupiter design  
Neptune design



**B250 Series**



**B500 Series**



**B600/700/800 Series**



**CO Series**  
all designs



**CS210**



**D Series knob**  
Orbit design



**L Series**  
all designs except  
concealed



**ND Series lever**  
all designs



**S Series**  
all designs  
except Flair

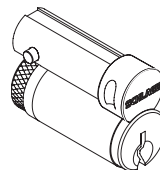


**S200 Series**  
all designs for S210  
  
All except Flair for  
other functions

## Full size interchangeable cores

### FSIC, core only, cylinders

Number	Pins	Cylinder mechanism
23-030	6	Standard pin and tumbler
23-031	6	Standard pin and tumbler, less logo
91-161	7	SL cylinder (restricted Everest 29 R and Everest B only)
91-162	7	SL cylinder, less logo (restricted Everest 29 R and Everest B only)
20-740	6	Primus
20-741	6	Primus, less logo
20-740-XP	6	Primus XP
20-741-XP	6	Primus XP, less logo
91-861-XP	7	SL cylinder (restricted Everest 29 R and Everest B only)
91-862-XP	7	SL cylinder, less logo (restricted Everest 29 R and Everest B only)
30-120	6	Faculty restroom standard pin and tumbler (specify hand)
30-121	6	Faculty restroom standard pin and tumbler, less logo (specify hand)



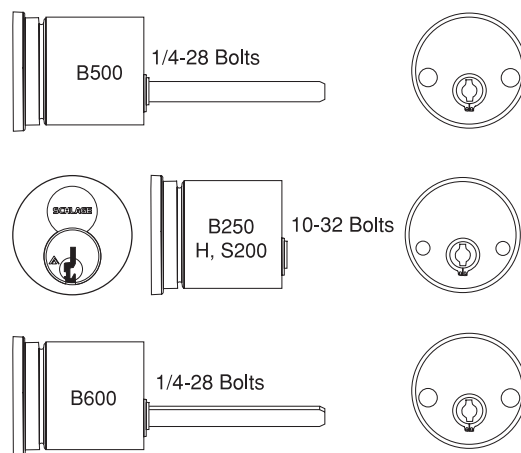
Full size (FSIC)

### FSIC housings for bored deadlocks, less core

Lockset series	Description	Number	Specify finish
B500 Series	Outside	B610-203 (single) B610-205 (double)	605, 606, 609, 612, 613, 619, 625, 626, and 643e
	Inside	B610-028 <sup>1</sup>	See note below
B250	Outside	22-061	605, 606, 609, 613, 625, 626
	Inside of B252	22-062	
H, S200 Series	Outside	5306-135	605, 606, 609, 612, 613, 625, 626
B600 / 700 Series	Outside	B610-203 (single) B610-205 (double)	605, 606, 609, 612, 613, 619, 625, 626, 643e
	Inside	B610-028	See note below

Specify finish of B610-031 inside snap-on faceplate ordered separately for B662/762, and B562.

<sup>1</sup> Inside housing does not include snap-on faceplate.



### FSIC padlocks

Brass lock body number	Shackle dimensions		
	A	B	C
Less - full size interchangeable core			
KS43D3200	3/8"	1 1/2"	3/4"
KS43F3200	3/8"	2"	3/4"

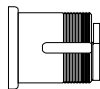


KS43F

# FSIC mortise cylinders for L Series



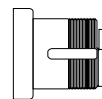
L & N escutcheons  
(cylinders with  
compression ring)



Cylinder only



Sectional trim  
(cylinder with  
compression ring,  
spring and 3/8"  
blocking ring)



Compression  
ring and spring



With blocking  
ring

## FSIC cylinders for Schlage L Series mortise locks

Design	Function	Core mechanism				
		Standard pin and tumbler	SL cylinder <sup>1</sup>	Primus Primus XP	Primus XP SL cylinder <sup>1</sup>	Housing less core
<b>L and N escutcheons</b> (cylinders with compression ring)	All except below	30-008	91-163	20-798 20-798-XP	91-863-XP	30-007
	L9060 outside	30-030	91-165	20-782 20-782-XP	91-865-XP	30-032 + 36-083
	L9485, L9486 faculty restroom	30-010 <sup>2</sup>	N/A	N/A	N/A	N/A
<b>Sectional trim</b> (cylinder with compression ring, spring and 3/8" blocking ring). 9060 requires 1/2" blocking ring.	All except below	30-138	91-169	20-776 20-776-XP	91-869-XP	30-137
	L9060 outside	30-030 + 36-082-050	91-165 + 36-082-050	20-783 20-783-XP	91-865-XP + 36-082-050	30-032 + 36-083 + 36-082-050
	L9485, L9486 faculty restroom	30-140 <sup>2</sup>	N/A	N/A	N/A	N/A

<sup>1</sup> For restricted Everest 29 R and Everest B only.

<sup>2</sup> Faculty restroom function cores are handed. Specify hand of door.



**L583-255**  
Cam for all  
functions  
except L9060  
outside



**K510-680**  
Cam for  
L9060 outside

## FSIC cylinders with straight cam for exit devices

Number	Core mechanism	Collar
26-091	Standard pin and tumbler	Compression ring and spring
20-061	Standard pin and tumbler	3/8" blocking rings + compression ring and spring
91-173	SL	3/8" blocking rings + compression ring and spring
20-763	Primus	Compression ring and spring
20-763-XP	Primus XP	Compression ring and spring
20-771	Primus	3/8" blocking rings + compression ring and spring
20-771-XP	Primus XP	3/8" blocking rings + compression ring and spring
91-873-XP	SL Primus XP	3/8" blocking rings + compression ring and spring
20-059	Housing less core	None
26-064	Housing less core	Compression ring and spring

Note: All cylinders are 1 1/2" long.



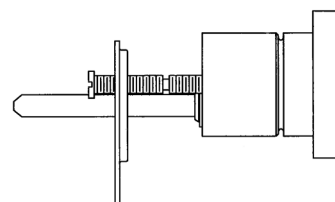
**K510-730**  
Straight cam,  
other applications

## Full size interchangeable cores

FSIC cylinders for exit devices,  
aluminum doors, etc.

## Interchangeable core rim cylinders for exit devices

Number	Core mechanism
20-057	Standard pin and tumbler
91-170	SL (restricted Everest 29 R and Everest B only)
20-757	Primus
20-757-XP	Primus XP
91-870-XP	Primus XP SL (restricted Everest 29 R and Everest B only)
20-079	Housing only, less core

Cylinders for Adams Rite MS and 4700 Series  
Lori 4500 Series and Corbin Russwin DL3000 Series

Number	Core mechanism	Collar
26-098	Standard pin and tumbler	Compression ring and spring
20-062	Standard pin and tumbler	3/16" + 3/8" blocking rings
91-174	SL	3/16" + 3/8" blocking rings
20-766	Primus	3/16" + 3/8" blocking rings
20-766-XP	Primus XP	3/16" + 3/8" blocking rings
91-874-XP	Primus XP SL	3/16" + 3/8" blocking rings
20-060	Housing only, less core	None



**K510-711**  
Adams Rite  
MS cam

Note: These cylinders include set screw pack B220-050 for Adams Rite locks.

## Cylinders for Adams Rite 4070 Series deadlocks

Number	Core mechanism	Collar
20-091	Standard pin and tumbler	3/16" + 3/8" blocking rings
91-175	SL	3/16" + 3/8" blocking rings
20-722	Primus	3/16" + 3/8" blocking rings
20-722-XP	Primus XP	3/16" + 3/8" blocking rings
91-875-XP	Primus XP SL	3/16" + 3/8" blocking rings
20-090	Housing less core	None



**B520-378**  
Adams Rite  
4070 cam

Note: All cylinders are 1 1/2" long.

## Finish options

Bright brass (605)	Satin brass (606)	Antique brass (609)	Satin bronze (612)	Oil rubbed bronze (613)	Satin nickel (619)	Matte black (622)	Bright chrome (625)	Satin chrome (626)	Aged bronze (643e)
Housing	Housing and core	Housing	Housing	Housing	Housing	Housing and core	Housing	Housing and core	Housing and core