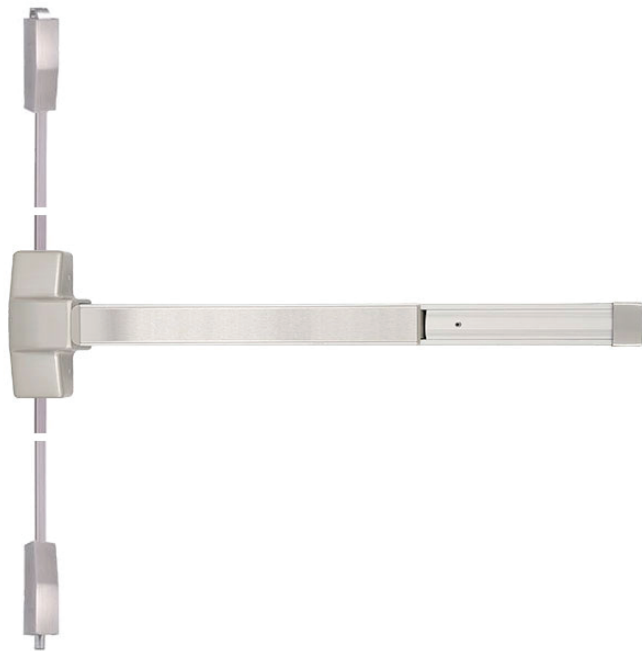




TDE-1000V Series

Grade-1, heavy-duty
surface vertical rod exit devices



Specifications

Construction	Heavy-duty extruded anodized aluminum channel and steel chassis. Steel headcover, pushbar, endcap, and latches
Handing	Easily Re-handed in the field - Shipped as RHR
Top latch	U Shaped Top Latch for Secure Engagement with strike
Bottom latch	Drop Bolt Style Bottom Latch Secures into flat strike & hole in the floor
Dogging	5/32" hex key dogging standard on panic exit hardware
Lengths	3ft (for 2'4" to 3'0" wide doors)
Door heights	7'0" Standard - Extended top rods available for up to 8'0" tall doors
Center Case	8" height x 2-7/8" wide x 2-13/16" thick - 4-1/2" minimum stile required
Projections	3-3/8" neutral or undogged, 2-13/16" depressed or dogged
Fasteners	Wood, machine & self tapping machine screws
Trim	Escutcheon levers
Undercut	1/4" door under cut recommended for 1/4" threshold or no threshold openings
Finishes	US32D/630 satin stainless steel
Warranty	Limited lifetime warranty

Code compliance

ANSI/BHMA	Meets ANSI/BHMA A156.3 Grade 1 standards
UL/cUL	UL listed panic hardware
ADA	Meets ADA and ANSI A117.1 accessibility codes with lever trim
CA Fire	Lever trim meets California code for 1/2" lever return to door face

